

Activity Name	Original Duration	Planned Start	Planned Finish	2011				2012				2013				2014				2015				2016	
				Q3	Q4	Q1	Q2	Q3	Q4	Q1	Q2	Q3	Q4	Q1	Q2	Q3	Q4	Q1	Q2	Q3	Q4	Q1	Q2		
<b>HY/2009/15 - CWB TUNNEL (CBTS SECTION)</b>																									
<b>SUBMISSIONS COMPLYING WITH EPs</b>																									
EM&A Manual ( rely on the Master EP's submission EP-364/2009/A Condition 2.9)																									
Baseline Monitoring Report (rely on the Master EP's submission EP-364/2009 Condition 3.3)																									
Monthly EM&A (rely on the masters EP's Submission, EP-364/2009/A Condition 3.4)																									
A dedicated website (rely on the master EP's submission, EP-364/2009/A Condition 4.2)																									
Management organization of main construction companies (FEP Condition 2.6)	1d	02-Oct-10	02-Oct-10																						
Work Schedule (FEP Condition 2.7)	1d	27-Oct-10	27-Oct-10																						
Location Plan (FEP Condition 2.8)	1d	27-Oct-10	27-Oct-10																						
Noise Management plan (FEP Condition 2.9)	1d	27-Oct-10	27-Oct-10																						
Landscape plan (FEP condition 2.10)	1d	31-Jan-11	31-Jan-11																						
<b>EAST VENTILATION ADIT</b>																									
CCT @ Portion 1, 2, 4, 6, 22	1315d	27-Sep-10	03-May-14																						
EV Adit @ Portion 4-Advance Works	526d	27-Sep-10	05-Mar-12																						
EV Adit Portion 1, 2, 6, 22	26d	22-Dec-11	16-Jan-12																						
EV Adit-based on Conforming Design	323d	15-Feb-12	02-Jan-13																						
<b>TCBR1E (TS1 Area)</b>																									
Diaphragm Wall Construction (incl. SI, & tests after completion)	107d	26-Apr-11	10-Aug-11																						
Excavation & Lateral Support, ELS	99d	16-Jul-11	22-Oct-11																						
Cut & Cover Tunnel Construction (incl. backfill)	78d	22-Oct-11	07-Jan-12																						
OHVD and Cable Trough (access from Portion 22)	76d	18-Dec-13	03-Mar-14																						
<b>TCBR2 + TCBR3 (TS2 Area)</b>																									
Diaphragm Wall Construction	118d	06-Jul-12	31-Oct-12																						
Excavation & Lateral Support, ELS	248d	06-Jul-12	10-Mar-13																						
Cut & Cover Tunnel Construction	164d	11-Mar-13	21-Aug-13																						
OHVD Cable Trough (Access from Portion 22)	150d	05-Aug-13	01-Jan-14																						
<b>TCBR1W (TS4 Area)</b>																									
Diaphragm Wall Construction	148d	28-Jun-11	22-Nov-11																						
Excavation & Lateral Support, ELS	319d	26-Jun-11	11-May-12																						
Landing Steps - Demolition/Reconstruct as footpath	40d	28-Jun-11	23-Aug-11																						

- ◆ Milestone
- ◆ Milestone
- ▬ Remaining Work
- ▬ Critical Remaining Work
- ▬ Actual Work

1 of 2

**China State Construction Engineering (Hong Kong) Ltd.**

**Contract No. HY/2009/15 - Central Wan Chai By Pass - Tunnel**

**( CBTS Section )**

Prepared by William Caluza			
Date	Revision	Checked	Approved
14-Mar-11	Revision C	ST	KL
	File: GC01a		
	(Layout:HY/2009/15: CWB - Summary)		

**中國建築工程(香港)有限公司**

CHINA STATE CONSTRUCTION ENGINEERING (HONG KONG) LTD

Activity Name	Original Duration	Planned Start	Planned Finish	2011					2012				2013				2014				2015				2016	
				Q3	Q4	Q1	Q2	Q3	Q4	Q1	Q2	Q3	Q4	Q1	Q2	Q3	Q4	Q1	Q2	Q3	Q4	Q1	Q2	Q3	Q4	Q1
Rock Excavation	235d	25-Apr-12	15-Dec-12																							
ME4-Diaphragm Wall	114d	10-May-12	19-Oct-12																							
AS Logistics Area for Mined Tunneling Works	174d	01-Jun-12	07-Feb-13																							
ME4-ELS Works	212d	01-Jun-12	02-Apr-13																							
SCL Entrusted Works	291d	18-Jul-12	08-Sep-13																							
Cut & Cover Tunnel Construction (w/o TS4 +)	111d	17-Dec-12	06-Apr-13																							
ME4-RC Structure	146d	28-Jan-13	21-Aug-13																							
OHVD and Cable Trough (Access from TZ5/TPCWAE/TPCWAW)	180d	17-Jun-13	13-Dec-13																							
<b>MINED TUNNEL</b>																										
CHT Protection Works @ location A, B, C	342d	27-Sep-10	01-Feb-12																							
Tunnel works from West Portal (access from TPCWAE& TZ5	418d	12-Mar-12	30-Oct-13																							
Tunnel Works from East Portal (Access from TS4 Area)	214d	30-Mar-12	01-Feb-13																							
Tunnel OHVD & Cable Trough	384d	02-Dec-13	22-May-15																							
<b>TPCWAE</b>																										
Drainage Diversion works along Hung Hing Road (Portion 19)	176d	15-Oct-10	24-Jun-11																							
Diaphragm Wall Construction	147d	20-May-11	13-Oct-11																							
Excavation & Lateral Support, ELS	421d	20-May-11	13-Jul-12																							
Rock Excavation	208d	12-Mar-12	03-Oct-12																							
AS Logistics Area for Mined Tunneling works	342d	12-May-12	18-Apr-13																							
Cut & Cover Tunnel Construction	130d	28-Jan-13	06-Jun-13																							
OHVD and Cable Trough (Access from TZ5/TPCWAW)	182d	18-Feb-15	18-Aug-15																							
<b>TPCWAW &amp; PORTION 11</b>																										
Diaphragm Wall Construction + Portion 11	222d	25-Oct-13	03-Jun-14																							
Excavation & Lateral Support, ELS	478d	25-Oct-13	14-Feb-15																							
Cut & Cover Tunnel Construction	143d	30-Dec-14	21-May-15																							
OHVD and Cable Trough Installation (Access from Portion 11)	235d	22-May-15	11-Jan-16																							

- ◆ Milestone
- ◆ Milestone
- ▨ Remaining Work
- ▨ Critical Remaining Work
- ▨ Actual Work

2 of 2

**China State Construction Engineering (Hong Kong) Ltd.**  
**Contract No. HY/2009/15 - Central Wan Chai By Pass - Tunnel**  
**(CBTS Section)**

Prepared by William Caluza			
Date	Revision	Checked	Approved
14-Mar-11	Revision C	ST	KL
	File: 0001a		
	(Layout: HY/2009/15: CWB - Summary)		











Data Date: 20-Apr-12  
 Print Date: 25-Apr-12

# HY/2009/18 Central - Wan Chai Bypass (Central Interchange)



TASK filters: 3 Months, Not HL.

Activity ID	Activity Name	Original Durati...	Start	Finish	Total Float	2012			
						Apr	May	Jun	Jul

**Updated 2012-04-20 CWB - Central Interchange (2011-12-23) Revised Detailed Wo...**

## PRELIMINARIES

### Access Dates & Milestones

#### Portion Possession Dates

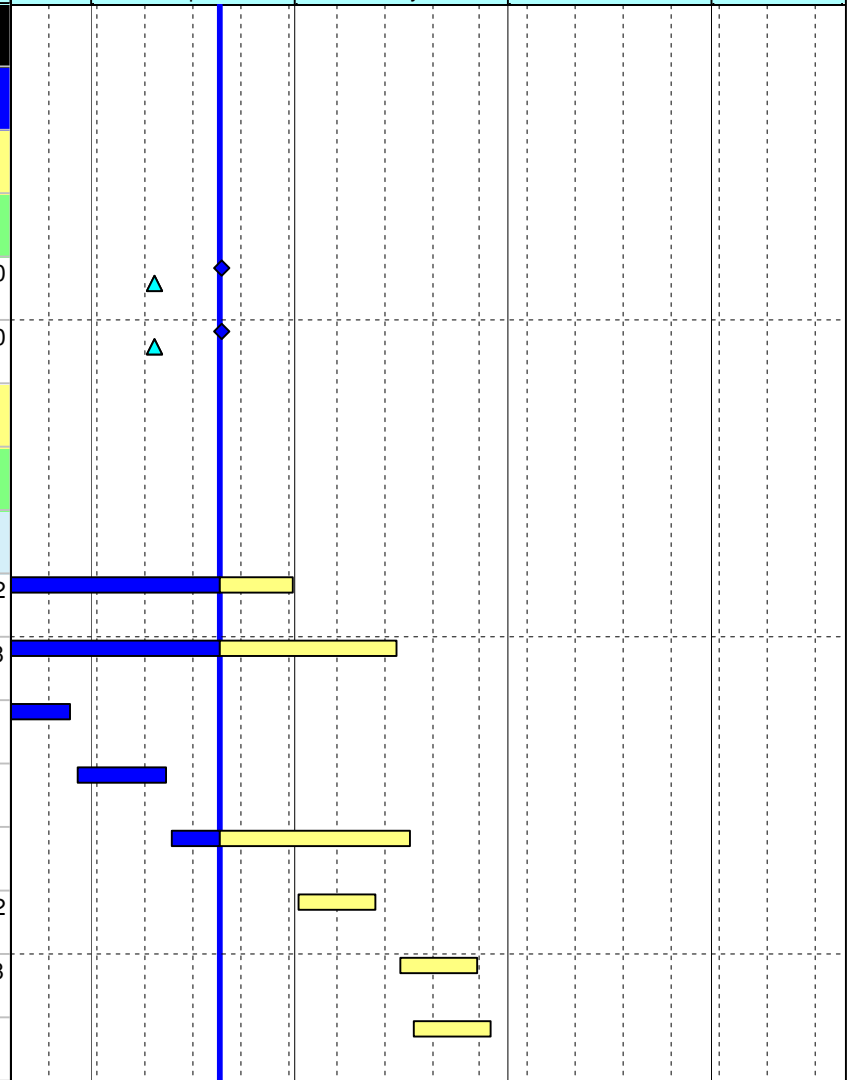
1285	Portion III B Available (DAY-567)	0	20-Apr-12*		-10				
1295	Portion III C Available (DAY-567)	0	20-Apr-12*		-10				

### Submissions & Approvals

#### Specified Plans

#### MTRC Impact Assessment Report

1558	Resubmit MTRC Impact Assessment Report - Cut & CoverTunnel	28	17-Feb-12 A	30-Apr-12	92				
1501	Resubmit MTRC Impact Assessment Report - Phase 2	12	19-Feb-12 A	15-May-12	138				
1371	Resubmit MTRC Impact Assessment Report - MYS Tunnel	28	25-Feb-12 A	29-Mar-12 A					
1534	MTRC Impact Assessment Report - Engineer / MTRC Review & Comment	12	30-Mar-12 A	12-Apr-12 A					
1535	Resubmit MTRC Impact Assessment Report - MYS Tunnel	28	13-Apr-12 A	17-May-12	121				
1559	MTRC Impact Assessment Report - Engineer / MTRC Review & Comment (Cut & Cover)	12	01-May-12	12-May-12	92				
1504	MTRC Impact Assessment Report - Engineer / MTRC Review & Comment (Phase 2)	12	16-May-12	27-May-12	138				
1553	MTRC Impact Assessment Report - Engineer / MTRC Review & Comment (MYS)	12	18-May-12	29-May-12	121				



- Current Milestone
- Critical Remaining Work
- Level of Effort
- Remaining Work
- Baseline Milestone
- Project Baseline
- Actual Work

## Leighton Contractors (Asia) Limited Programme Update 19 (Apr 2012) THREE MONTH ROLLING

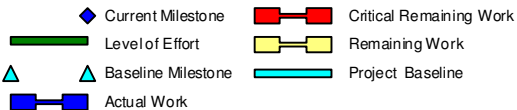
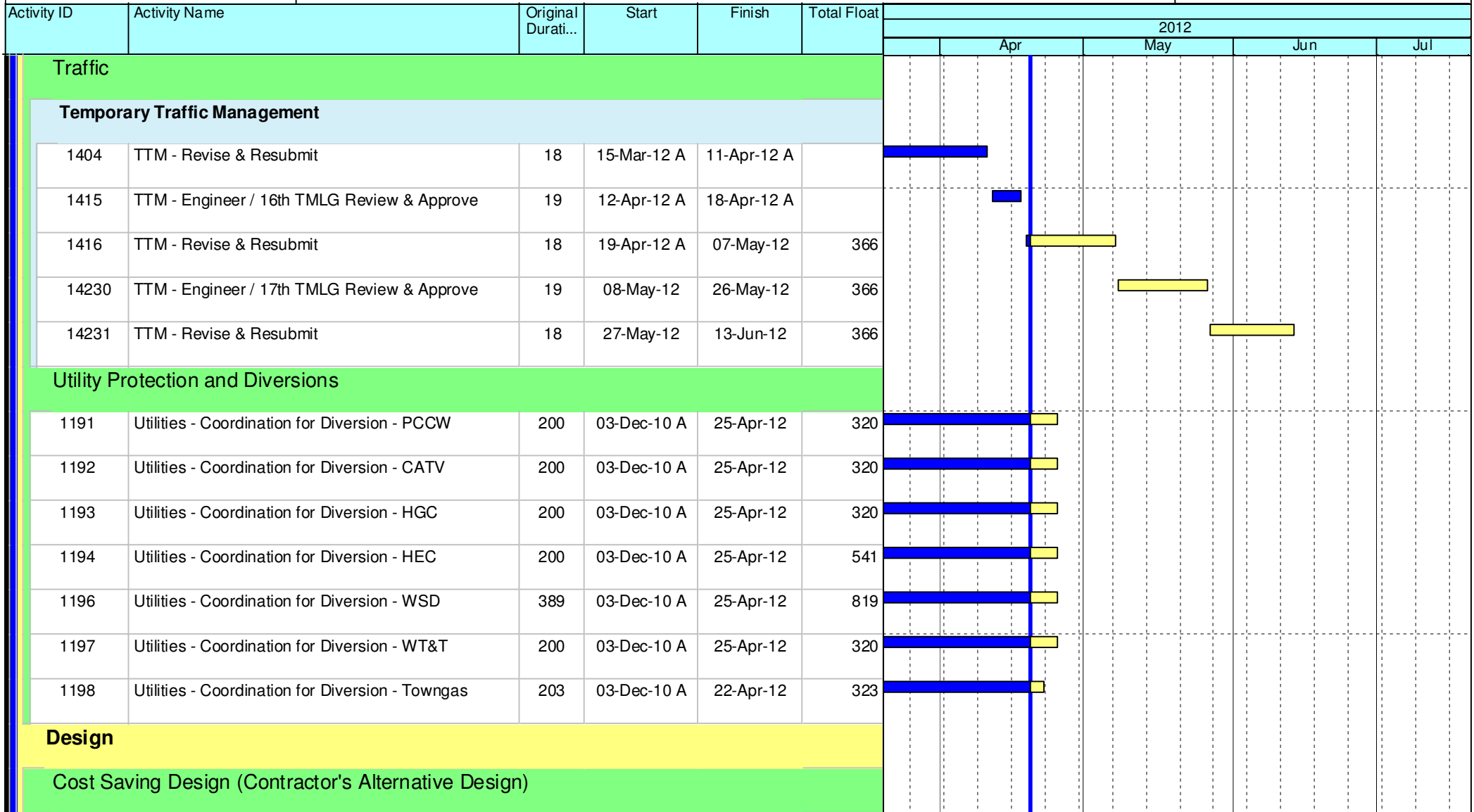
Project ID: U019  
 Baseline: DCP3-3  
 Layout: Update Three Month Rolling U018  
 Page 1 of 12

U019 Programme Update 19 (Apr 2012)			
Date	Revision	Checked	Approv...
21-Apr-12	U019	RC	DS
21-Mar-12	U018	RC	DS

## HY/2009/18 Central - Wan Chai Bypass (Central Interchange)



TASK filters: 3 Months, Not HL.



### Leighton Contractors (Asia) Limited Programme Update 19 (Apr 2012) THREE MONTH ROLLING

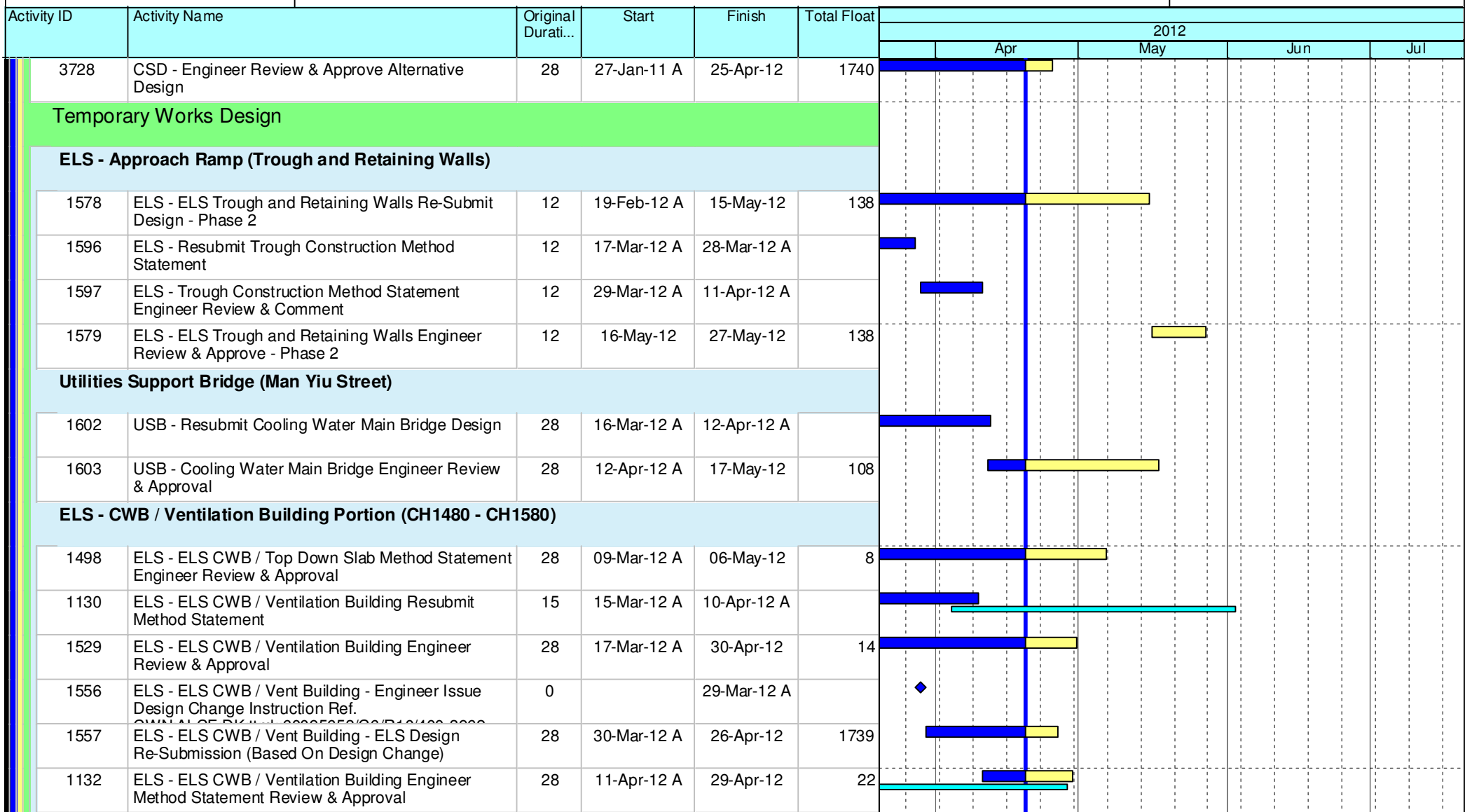
Project ID: U019  
 Baseline: DCP3-3  
 Layout: Update Three Month Rolling U018  
 Page 2 of 12

U019 Programme Update 19 (Apr 2012)			
Date	Revision	Checked	Approv...
21-Apr-12	U019	RC	DS
21-Mar-12	U018	RC	DS

## HY/2009/18 Central - Wan Chai Bypass (Central Interchange)



TASK filters: 3 Months, Not HL.



Current Milestone	Critical Remaining Work
Level of Effort	Remaining Work
Baseline Milestone	Project Baseline
Actual Work	

### Leighton Contractors (Asia) Limited Programme Update 19 (Apr 2012) THREE MONTH ROLLING

Project ID: U019  
 Baseline: DCP3-3  
 Layout: Update Three Month Rolling U018  
 Page 3 of 12

U019 Programme Update 19 (Apr 2012)			
Date	Revision	Checked	Approv...
21-Apr-12	U019	RC	DS
21-Mar-12	U018	RC	DS

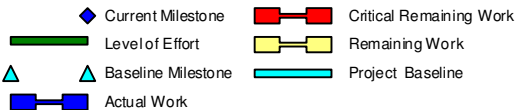


# HY/2009/18 Central - Wan Chai Bypass (Central Interchange)



TASK filters: 3 Months, Not HL.

Activity ID	Activity Name	Original Durati...	Start	Finish	Total Float	2012					
						Apr	May	Jun	Jul		
<b>ELS - CWB Man Yiu Street Portion &amp; Tunnel Modification Works (CH1646 - CH1685)</b>											
3932	ELS - ELS CWB Man Yiu Street Portion Design Resubmission	15	25-Feb-12 A	29-Mar-12 A		█					
1593	ELS - ELS CWB Man Yiu Street Portion Method Statement Resubmission	28	14-Mar-12 A	17-May-12	105	█	█				
3933	ELS - ELS CWB Man Yiu Street Portion Engineer Review & Approve	28	30-Mar-12 A	12-Apr-12 A		█					
1581	ELS - ELS CWB Man Yiu Street Portion Design Resubmission	15	13-Apr-12 A	04-May-12	28		█				
1582	ELS - ELS CWB Man Yiu Street Portion Engineer Review & Approve	28	05-May-12	01-Jun-12	28			█			
1595	ELS - ELS CWB Man Yiu Street Portion Engineer Review & Approve	28	18-May-12	14-Jun-12	105			█			
<b>ELS - CWB Cut &amp; Cover Portion (CH1580 - CH1646)</b>											
1497	ELS - ELS CWB CH1580-CH1646 Portion Re-submit Design	15	17-Feb-12 A	30-Apr-12	17	█	█				
3937	ELS - ELS CWB CH1580-CH1646 Portion Prepare Method Statement	15	01-May-12	15-May-12	17		█				
1496	ELS - ELS CWB CH1580-CH1646 Portion Re-submit Design Engineer Review & Comment	12	01-May-12	12-May-12	48		█				
3939	ELS - ELS CWB CH1580-CH1646 Portion Method Statement Engineer Review & Approval	28	16-May-12	12-Jun-12	17		█	█			
<b>ELS - CWB CRIII Portion (CH1685 - CH1704)</b>											
1604	ELS - ELS CRIII Portion Resubmit Design	28	25-Feb-12 A	29-Mar-12 A		█					
1605	ELS - ELS CRIII Portion Engineer Review & Approve	28	30-Mar-12 A	12-Apr-12 A		█					
1606	ELS - ELS CRIII Portion Resubmit Design	28	12-Apr-12 A	04-May-12	471		█				
3943	ELS - ELS CRIII Portion Prepare Method Statement	15	20-Apr-12	04-May-12	471		█				



## Leighton Contractors (Asia) Limited Programme Update 19 (Apr 2012) THREE MONTH ROLLING

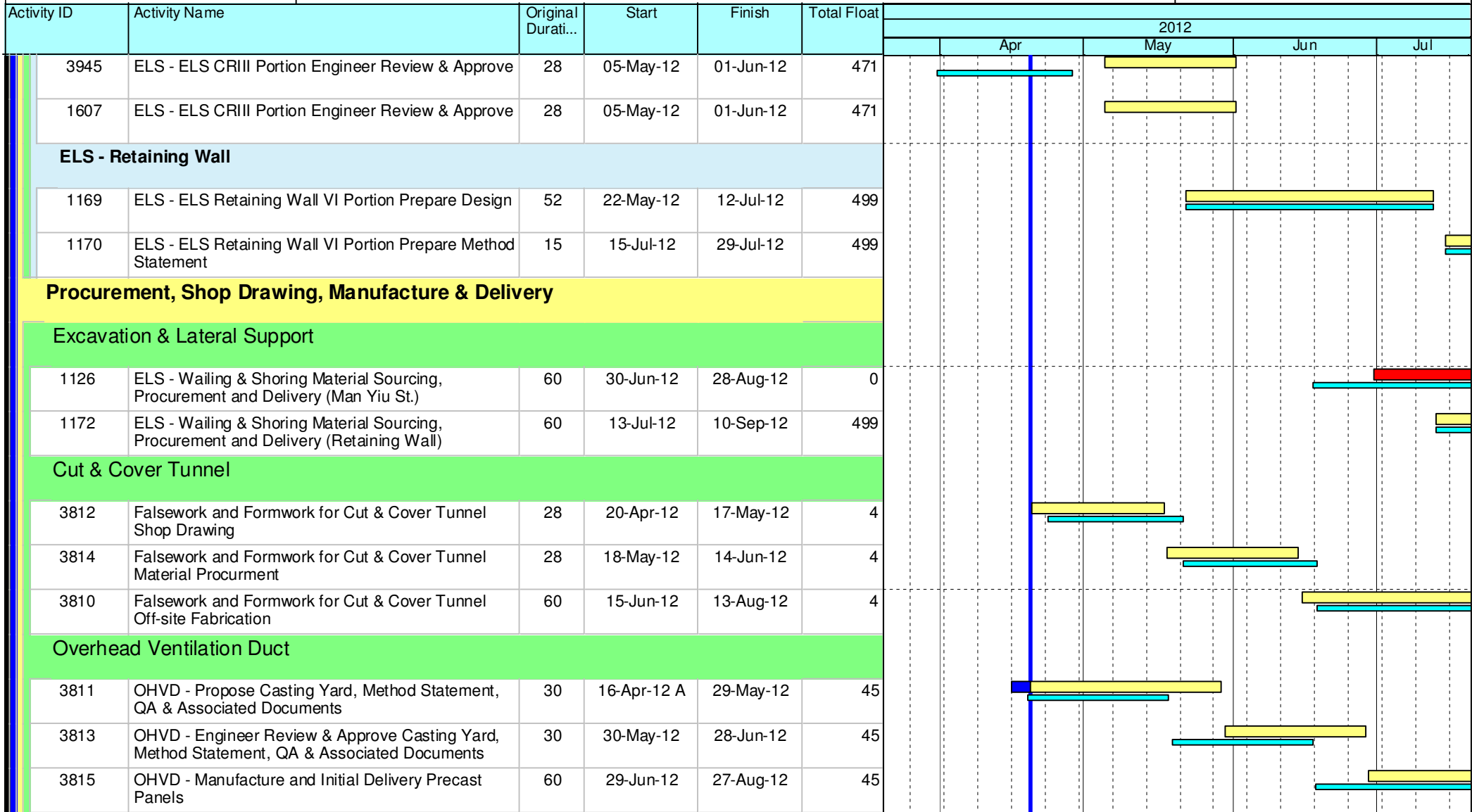
Project ID: U019  
 Baseline: DCP3-3  
 Layout: Update Three Month Rolling U018  
 Page 4 of 12

U019 Programme Update 19 (Apr 2012)			
Date	Revision	Checked	Approv...
21-Apr-12	U019	RC	DS
21-Mar-12	U018	RC	DS

## HY/2009/18 Central - Wan Chai Bypass (Central Interchange)



TASK filters: 3 Months, Not HL.



Current Milestone	Critical Remaining Work
Level of Effort	Remaining Work
Baseline Milestone	Project Baseline
Actual Work	

### Leighton Contractors (Asia) Limited Programme Update 19 (Apr 2012) THREE MONTH ROLLING

Project ID: U019  
 Baseline: DCP3-3  
 Layout: Update Three Month Rolling U018  
 Page 5 of 12

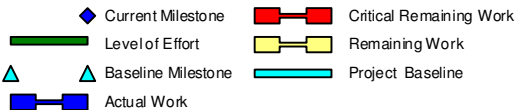
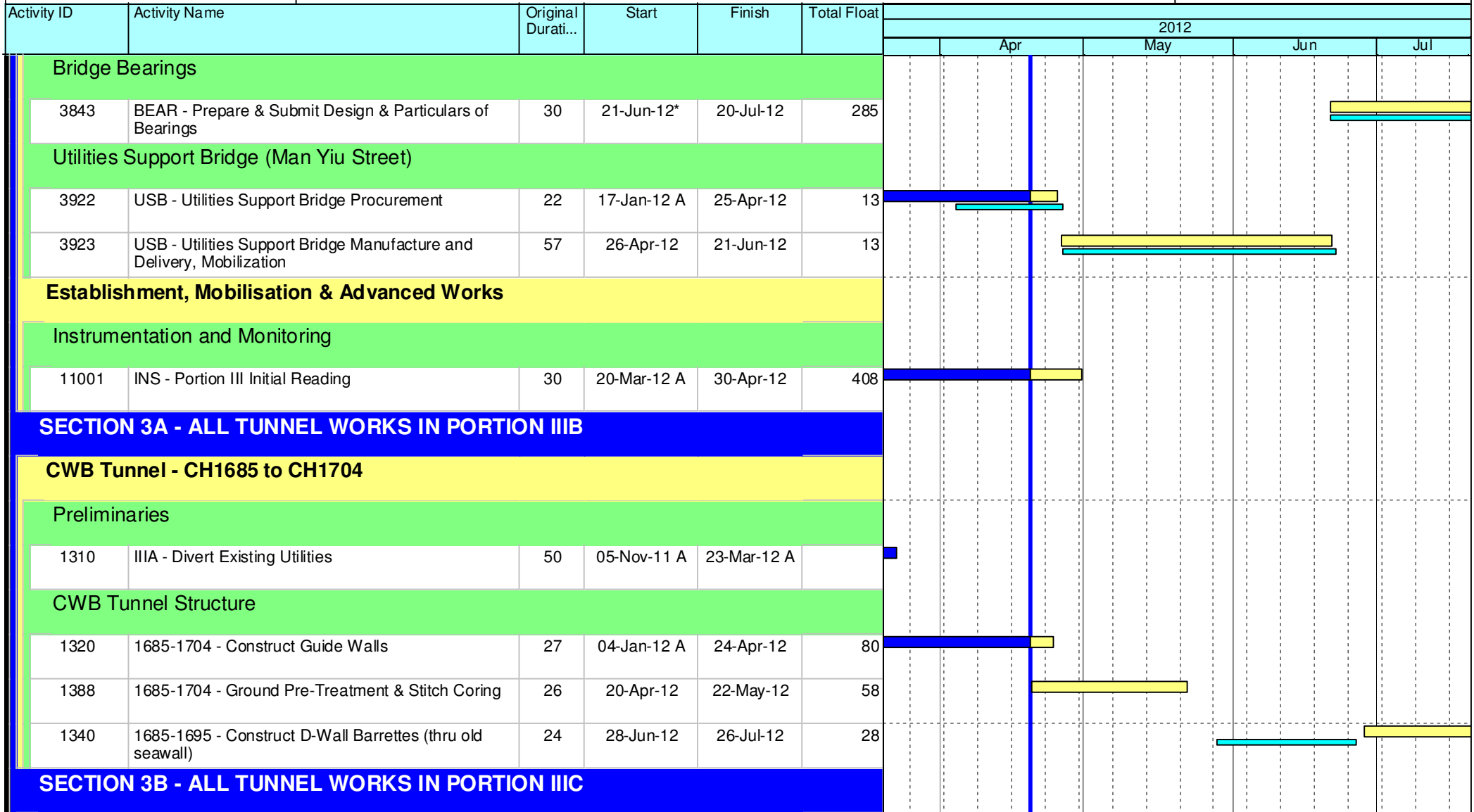
U019 Programme Update 19 (Apr 2012)			
Date	Revision	Checked	Approv...
21-Apr-12	U019	RC	DS
21-Mar-12	U018	RC	DS

Data Date: 20-Apr-12  
 Print Date: 25-Apr-12

## HY/2009/18 Central - Wan Chai Bypass (Central Interchange)



TASK filters: 3 Months, Not HL.



### Leighton Contractors (Asia) Limited Programme Update 19 (Apr 2012) THREE MONTH ROLLING

Project ID: U019  
 Baseline: DCP3-3  
 Layout: Update Three Month Rolling U018  
 Page 6 of 12

U019 Programme Update 19 (Apr 2012)			
Date	Revision	Checked	Approv...
21-Apr-12	U019	RC	DS
21-Mar-12	U018	RC	DS

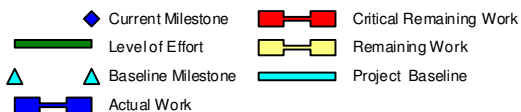
Data Date: 20-Apr-12  
 Print Date: 25-Apr-12

# HY/2009/18 Central - Wan Chai Bypass (Central Interchange)



TASK filters: 3 Months, Not HL.

Activity ID	Activity Name	Original Durati...	Start	Finish	Total Float	2012				
						Apr	May	Jun	Jul	
<b>CWB Tunnel - CH1825 to CH2600</b>										
<b>CWB Tunnel Internal Works</b>										
1368	1825-2600 - Access Available via Roof Opening at CH1700	0		20-Apr-12	38					
1370	2213-2600 - Construct Insitu Roof Kickers	78	20-Apr-12	24-Jul-12	38					
<b>SECTION 4B - ALL TUNNEL WORKS IN PORTION IVC, IVD, IVE &amp; IVF</b>										
<b>CWB Tunnel - CH1480 to CH1580</b>										
<b>Preliminaries</b>										
1379	IVC - Temp. Divert Finance St.	12	20-Apr-12	05-May-12	51					
1346	IVC - Reinstate Drainage along Finance Street (Stage 2)	26	07-May-12	05-Jun-12	51					
1352	IVC - Reinstate Finance Street (Stage2 Area)	12	06-Jun-12	19-Jun-12	51					
<b>CWB Tunnel Structure</b>										
11006	1480-1580 - Construct D-Wall / Barrettes (Exclude W2D11)	74	27-Sep-11 A	20-Mar-12 A						
1571	1480-1580 - Sonic Test, Interface Core Test & Full Core Test	24	02-Dec-11 A	24-Apr-12	15					
1409	1480-1580 - Construct D-Wall (W2D11)	10	05-Mar-12 A	20-Mar-12 A						
1468	1480-1580 - Construct D-Wall (W2D18)	10	07-Mar-12 A	20-Mar-12 A						
1411	1480-1580 - Slurry Wall (Ch1480)	15	08-Mar-12 A	30-Mar-12 A						
1491	1480-1580 - Installation of Pump Well	24	09-Mar-12 A	20-Apr-12 A						



## Leighton Contractors (Asia) Limited Programme Update 19 (Apr 2012) THREE MONTH ROLLING

Project ID: U019  
 Baseline: DCP3-3  
 Layout: Update Three Month Rolling U018  
 Page 7 of 12

U019 Programme Update 19 (Apr 2012)			
Date	Revision	Checked	Approv...
21-Apr-12	U019	RC	DS
21-Mar-12	U018	RC	DS

# HY/2009/18 Central - Wan Chai Bypass (Central Interchange)



TASK filters: 3 Months, Not HL.

Activity ID	Activity Name	Original Durati...	Start	Finish	Total Float	2012				
						Apr	May	Jun	Jul	
1408	1480-1580 - Construct D-Wall (W2D8)	11	17-Mar-12 A	31-Mar-12 A						
1575	1480-1580 - Slurry Wall (Ch1580)	14	10-Apr-12 A	23-Apr-12	4					
1347	1480-1580 - Excavate for Top Slabs	18	18-Apr-12 A	08-May-12	5					
1572	1480-1580 - Pump Test	12	24-Apr-12	09-May-12	4					
1349	1480-1580 - Construct Top Slabs	24	09-May-12	05-Jun-12	5					
1580	1480-1580 - Excavate & Lateral Support to Bottom of CWB Tunnel(1480-1600)	100	10-May-12	05-Sep-12	4					
11300	1480-1580 - Excavate 1st Layer	36	10-May-12	20-Jun-12	4					
11320	1480-1580 - Erect 1st Layer Support	33	30-May-12	09-Jul-12	4					
1517	1480-1580 - Excavate 2nd Layer	15	10-Jul-12	26-Jul-12	4					
1519	1480-1580 - Erect 2nd Layer Support	15	17-Jul-12	02-Aug-12	4					

## SECTION 4A - ALL TUNNEL WORKS IN PORTION IVA, IVB, IVG & IVH

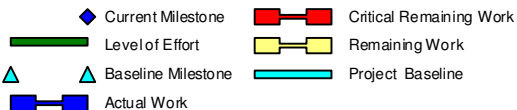
### CWB Tunnel - CH1580 to CH1646

#### Preliminaries

1657	IVA & IVG - Divert Existing Utilities WSD, HGC	26	03-Apr-12 A	10-Apr-12 A						
1566	IVA & IVG - Divert Existing Utilities HEC (Changeover)	29	20-Apr-12	25-May-12	0					

#### CWB Tunnel Structure

1663	1580-1646 - Pre-drilling (Site Investigation) W1D20 - W1D30, BC12 - BC15	30	30-Jul-11 A	30-Mar-12 A						
------	--	----	-------------	-------------	--	--	--	--	--	--



## Leighton Contractors (Asia) Limited Programme Update 19 (Apr 2012) THREE MONTH ROLLING

Project ID: U019  
Baseline: DCP3-3  
Layout: Update Three Month Rolling U018  
Page 8 of 12

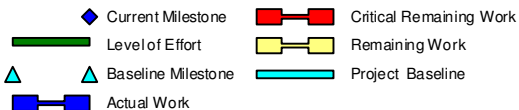
U019 Programme Update 19 (Apr 2012)			
Date	Revision	Checked	Approv...
21-Apr-12	U019	RC	DS
21-Mar-12	U018	RC	DS

# HY/2009/18 Central - Wan Chai Bypass (Central Interchange)



TASK filters: 3 Months, Not HL.

Activity ID	Activity Name	Original Durati...	Start	Finish	Total Float	2012				
						Apr	May	Jun	Jul	
1664	1580-1646 - Construct Guide Walls W1D20 - W1D30, BC12 - BC15	48	30-Jul-11 A	24-Apr-12	29					
1341	1580-1646 - Construct Guide Walls (W2D20 - W2D30) Exclude W2D28	18	12-Dec-11 A	24-Apr-12	41					
1665	1580 - 1646 - Construct D-Wall / Barrettes 1600 - 1646	46	09-Jan-12 A	13-Jun-12	0					
1387	1580 - 1646 - Construct Utilities Bridges	26	08-Mar-12 A	02-Apr-12 A						
1482	1580 - 1646 - Construct D-Wall (W1D24)	5	19-Mar-12 A	24-Mar-12 A						
1487	1580 - 1646 - Construct D-Wall (W2D23)	12	20-Mar-12 A	03-Apr-12 A						
1485	1580 - 1646 - Construct D-Wall (W2D20)	6	22-Mar-12 A	28-Mar-12 A						
1483	1580 - 1646 - Construct D-Wall (W1D23)	14	27-Mar-12 A	19-Apr-12 A						
1488	1580 - 1646 - Construct D-Wall (W2D19)	6	29-Mar-12 A	05-Apr-12 A						
1509	1580 - 1646 - Construct D-Wall (BC13)	16	29-Mar-12 A	05-May-12	1					
1511	1580 - 1646 - Construct D-Wall (BC12)	16	11-Apr-12 A	27-Apr-12	6					
1515	1580 - 1646 - Construct D-Wall (BC11)	14	30-Apr-12	16-May-12	24					
1513	1580 - 1646 - Construct D-Wall (BC14)	12	07-May-12	19-May-12	1					
1666	1580-1646 - Slurry Wall	24	16-May-12	12-Jun-12	1					
1567	1580 - 1646 - Construct D-Wall (W1D30)	8	26-May-12	04-Jun-12	0					
1568	1580 - 1646 - Construct D-Wall (W1D28)	8	29-May-12	06-Jun-12	0					
1569	1580 - 1646 - Construct D-Wall (W1D29)	8	31-May-12	08-Jun-12	0					



## Leighton Contractors (Asia) Limited Programme Update 19 (Apr 2012) THREE MONTH ROLLING

Project ID: U019  
 Baseline: DCP3-3  
 Layout: Update Three Month Rolling U018  
 Page 9 of 12

U019 Programme Update 19 (Apr 2012)			
Date	Revision	Checked	Approv...
21-Apr-12	U019	RC	DS
21-Mar-12	U018	RC	DS

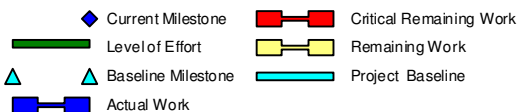


## HY/2009/18 Central - Wan Chai Bypass (Central Interchange)



TASK filters: 3 Months, Not HL.

Activity ID	Activity Name	Original Durati...	Start	Finish	Total Float	2012				
						Apr	May	Jun	Jul	
1573	1580 - 1646 - Construct D-Wall (W2D30)	8	02-Jun-12	11-Jun-12	77					
1574	1580 - 1646 - Construct D-Wall (W2D29)	8	05-Jun-12	13-Jun-12	77					
1667	1580-1646 - Sonic Test, Interface Core Test & Full Core Test	24	14-Jun-12	13-Jul-12	25					
1668	1580-1646 - Pump Test	12	14-Jun-12	28-Jun-12	1					
1391	1580-1646 - Excavate Top Slab	18	29-Jun-12	20-Jul-12	1					
<b>CWB Tunnel - CH1646 to CH1685</b>										
<b>CWB Tunnel Structure</b>										
2540	1646-1685 - Pre-drilling (Site Investigation)	25	15-Dec-11 A	23-Apr-12	9					
2550	1646-1685 - Construct Guide Walls	25	20-Apr-12	21-May-12	4					
1389	1646-1685 - Ground Treatment	12	24-Apr-12	09-May-12	14					
2560	1646-1685 - Construct Barrettes BC16-BC18, BC21, BC22	27	26-May-12	27-Jun-12	0					
1561	1646-1685 - Construct Barrettes BC21	12	26-May-12	08-Jun-12	0					
1562	1646-1685 - Construct Barrettes BC22	12	30-May-12	12-Jun-12	66					
1563	1646-1685 - Construct Barrettes BC16	12	04-Jun-12	16-Jun-12	66					
1564	1646-1685 - Construct Barrettes BC17	12	08-Jun-12	21-Jun-12	66					
2705	1646-1685 - Install Pipe/Sheet Pile Wall	50	09-Jun-12	08-Aug-12	0					
1565	1646-1685 - Construct Barrettes BC18	12	13-Jun-12	27-Jun-12	66					



### Leighton Contractors (Asia) Limited Programme Update 19 (Apr 2012) THREE MONTH ROLLING

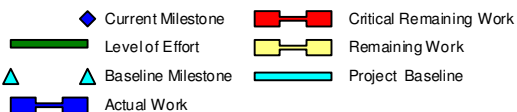
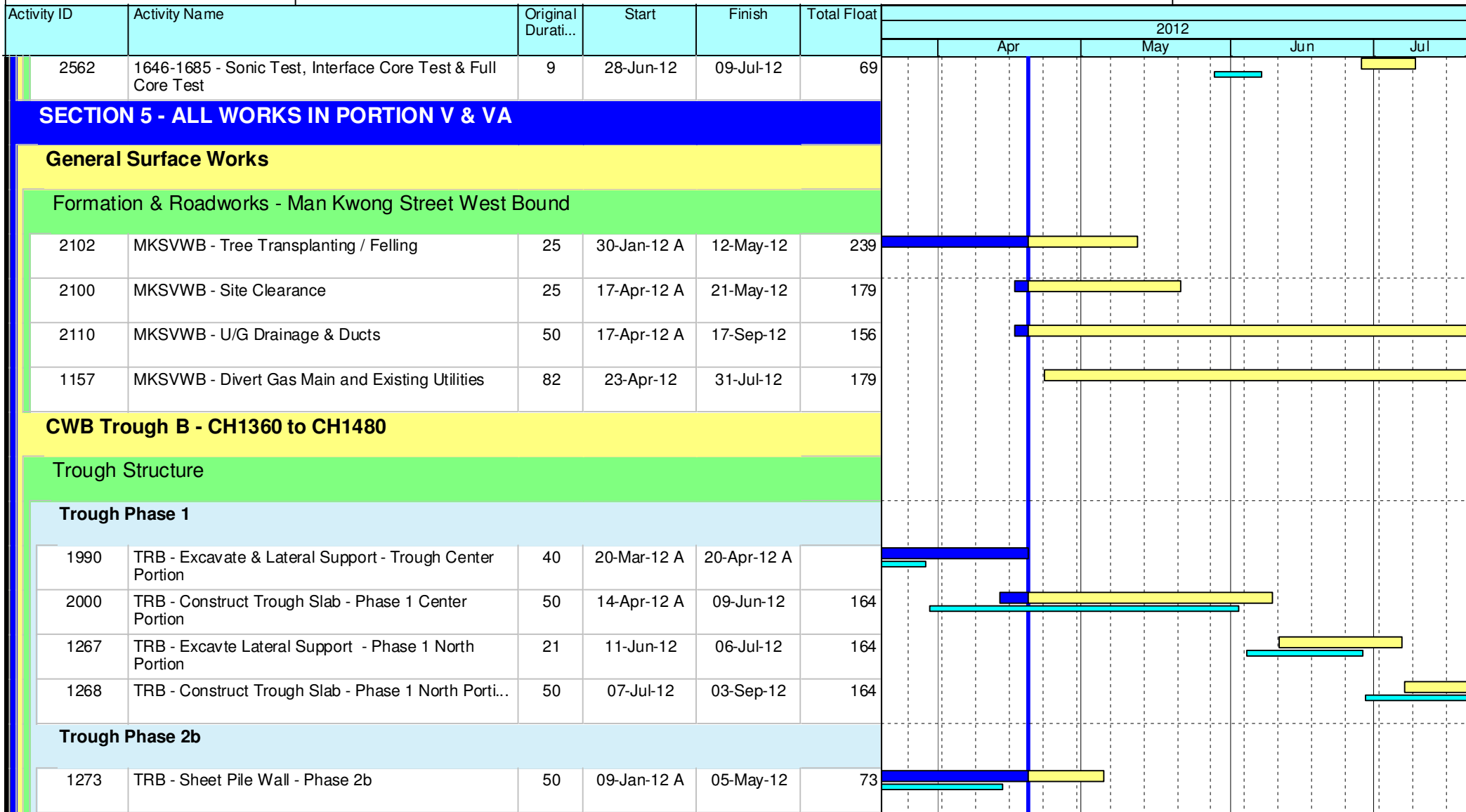
Project ID: U019  
 Baseline: DCP3-3  
 Layout: Update Three Month Rolling U018  
 Page 10 of 12

U019 Programme Update 19 (Apr 2012)			
Date	Revision	Checked	Approv...
21-Apr-12	U019	RC	DS
21-Mar-12	U018	RC	DS

# HY/2009/18 Central - Wan Chai Bypass (Central Interchange)



TASK filters: 3 Months, Not HL.



## Leighton Contractors (Asia) Limited Programme Update 19 (Apr 2012) THREE MONTH ROLLING

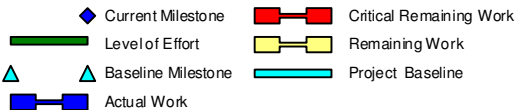
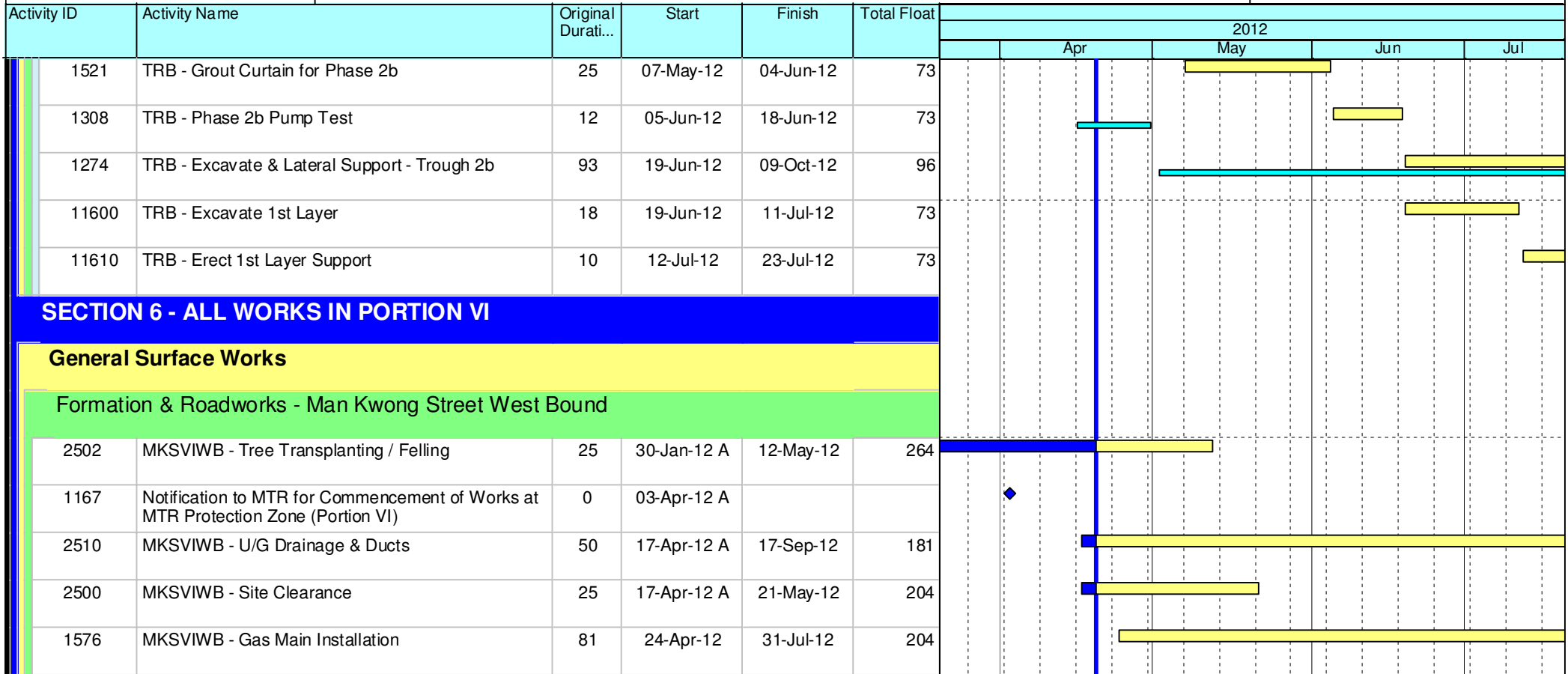
Project ID: U019  
 Baseline: DCP3-3  
 Layout: Update Three Month Rolling U018  
 Page 11 of 12

U019 Programme Update 19 (Apr 2012)			
Date	Revision	Checked	Approv...
21-Apr-12	U019	RC	DS
21-Mar-12	U018	RC	DS

# HY/2009/18 Central - Wan Chai Bypass (Central Interchange)



TASK filters: 3 Months, Not HL.



## Leighton Contractors (Asia) Limited Programme Update 19 (Apr 2012) THREE MONTH ROLLING

Project ID: U019  
 Baseline: DCP3-3  
 Layout: Update Three Month Rolling U018  
 Page 12 of 12

U019 Programme Update 19 (Apr 2012)			
Date	Revision	Checked	Approv...
21-Apr-12	U019	RC	DS
21-Mar-12	U018	RC	DS

Data Date: 20-Aug-12  
 Print Date: 25-Aug-12

# HY/2009/18 Central - Wan Chai Bypass (Central Interchange)



TASK filters: 3 Months, Not HL.

Activity ID	Activity Name	Original Durati...	Start	Finish	Total Float	2012					
						Aug	Sep	Oct	Nov		
<b>Update 2012-08-20 CWB - Central Interchange (2012-07-16) Revised DWP R3</b>											
<b>PRELIMINARIES</b>											
<b>Access Dates &amp; Milestones</b>											
Portion Possession Dates											
1304	Portion VI Available (DAY-783)	0	12-Nov-12*		0						
<b>Submissions &amp; Approvals</b>											
Programme											
1689	Programme - Engineer Review and Approve Revised Detailed Works Programme and Narrative Statement	28	18-Jul-12 A	08-Aug-12 A							
<b>Specified Plans</b>											
<b>MTRC Impact Assessment Report</b>											
1501	Resubmit MTRC Impact Assessment Report - Phase 2	12	19-Feb-12 A	13-Aug-12 A							
1553	MTRC Impact Assessment Report - Engineer / MTRC Review & Comment (MYS)	12	01-Jun-12 A	20-Jul-12 A							
1669	Resubmit MTRC Impact Assessment Report - Cut & Cover Tunnel	28	03-Jun-12 A	17-Aug-12 A							
1504	MTRC Impact Assessment Report - Engineer / MTRC Review & Comment (Phase 2)	12	14-Aug-12 A	25-Aug-12	10						
1670	MTRC Impact Assessment Report - Engineer / MTRC Review & Comment (Cut & Cover)	12	18-Aug-12 A	29-Aug-12	57						
<b>Traffic</b>											
<b>Temporary Traffic Management</b>											

- Current Milestone
- Critical Remaining Work
- Level of Effort
- Remaining Work
- Baseline Milestone
- Project Baseline
- Actual Work

## Leighton Contractors (Asia) Limited Programme Update 23 (Aug 2012) THREE MONTH ROLLING

Project ID: U023  
 Baseline: DCP4-2  
 Layout: Update Three Month Rolling U023  
 Page 1 of 12

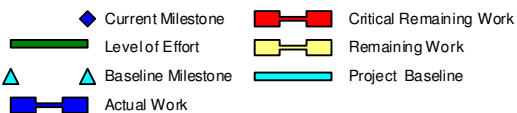
U023 Programme Update 23 (Aug 2012)			
Date	Revision	Checked	Approv...
21-Aug-12	U023	RC	RW
21-Jul-12	U022	RC	RW

## HY/2009/18 Central - Wan Chai Bypass (Central Interchange)



TASK filters: 3 Months, Not HL.

Activity ID	Activity Name	Original Durati...	Start	Finish	Total Float	2012				
						Aug	Sep	Oct	Nov	
1637	TTM - Engineer / 18th TMLG Review & Approve	19	18-Jul-12 A	24-Jul-12 A						
1638	TTM - Revise & Resubmit	18	25-Jul-12 A	22-Aug-12 A						
1691	TTM - Engineer / 19th TMLG Review & Approve	19	20-Aug-12	07-Sep-12	308					
1692	TTM - Revise & Resubmit	18	08-Sep-12	25-Sep-12	308					
1697	TTM - Engineer / 20th TMLG Review & Approve	19	26-Sep-12	14-Oct-12	308					
1700	TTM - Revise & Resubmit	18	15-Oct-12	01-Nov-12	308					
<b>Design</b>										
<b>Cost Saving Design (Contractor's Alternative Design)</b>										
3728	CSD - Engineer Review & Approve Alternative Design (OHVD)	28	27-Jan-11 A	25-Aug-12	1481					
1617	BP - Pre-bored H Pile Scheme Design Engineer Review & Approval	28	03-May-12 A	25-Aug-12	389					
1642	BP - Pre-bored H Pile Scheme Design Engineer Review & Approval	28	21-Jun-12 A	25-Aug-12	389					
1701	BP - Prepare & Submit Revised Pre-bored H Pile Detailed Design	52	21-Jun-12 A	16-Aug-12 A						
1763	BP - Revised Pre-bored H Pile Scheme Design Engineer Review & Approval	28	17-Aug-12 A	13-Sep-12	370					
<b>Temporary Works Design</b>										
<b>Bridge / Viaduct Temporary Works</b>										
3690	Bridge/Viaduct - Scaffolding Design Engineer Review & Comment	28	16-Jun-12 A	26-Aug-12	527					
1643	Bridge/Viaduct - ELS Design Engineer Review & Comment	28	16-Jun-12 A	20-Aug-12 A						



### Leighton Contractors (Asia) Limited Programme Update 23 (Aug 2012) THREE MONTH ROLLING

Project ID: U023  
 Baseline: DCP4-2  
 Layout: Update Three Month Rolling U023  
 Page 2 of 12

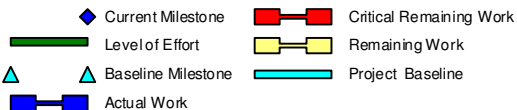
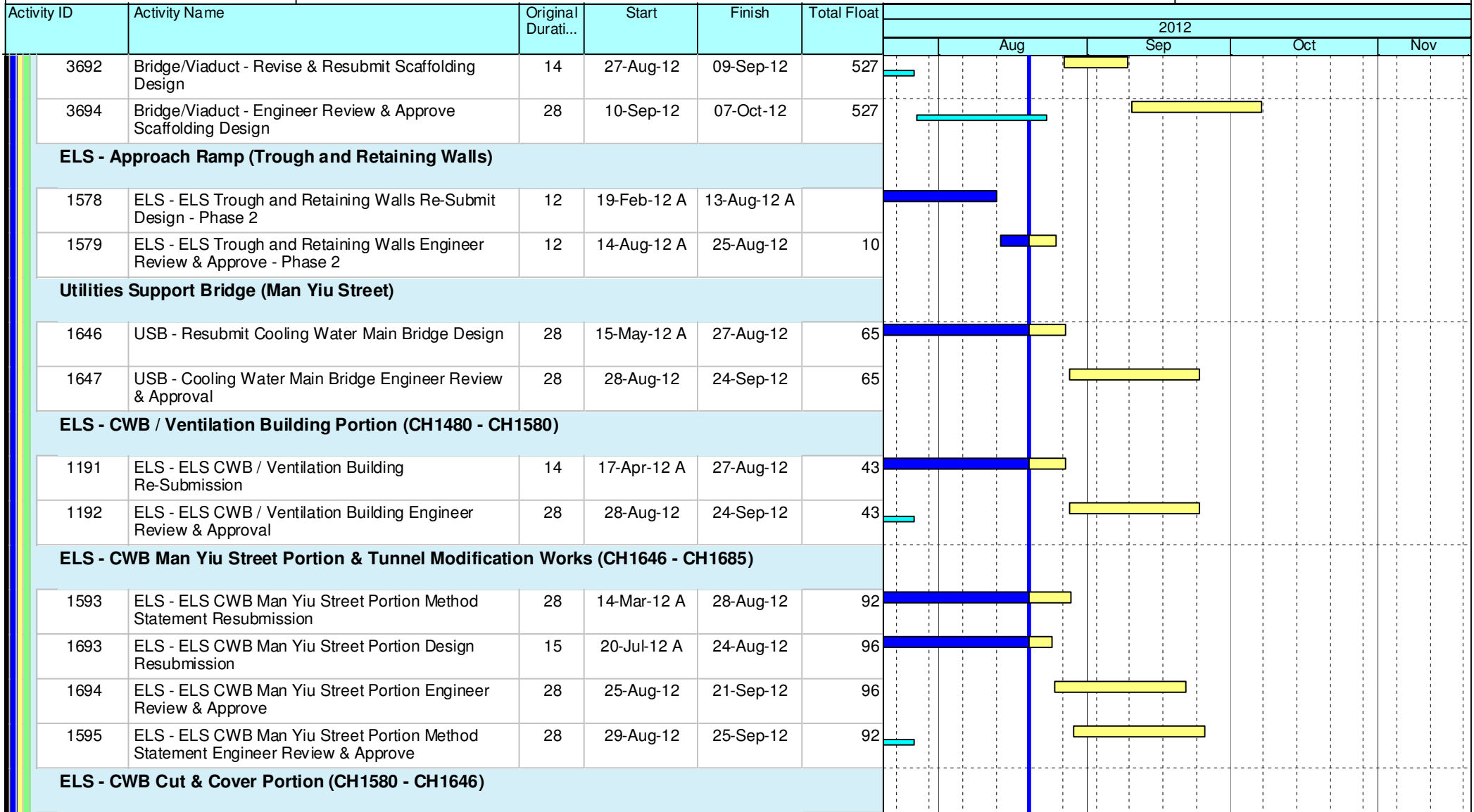
U023 Programme Update 23 (Aug 2012)			
Date	Revision	Checked	Approv...
21-Aug-12	U023	RC	RW
21-Jul-12	U022	RC	RW

Data Date: 20-Aug-12  
 Print Date: 25-Aug-12

# HY/2009/18 Central - Wan Chai Bypass (Central Interchange)



TASK filters: 3 Months, Not HL.



## Leighton Contractors (Asia) Limited Programme Update 23 (Aug 2012) THREE MONTH ROLLING

Project ID: U023  
 Baseline: DCP4-2  
 Layout: Update Three Month Rolling U023  
 Page 3 of 12

U023 Programme Update 23 (Aug 2012)			
Date	Revision	Checked	Approv...
21-Aug-12	U023	RC	RW
21-Jul-12	U022	RC	RW



# HY/2009/18 Central - Wan Chai Bypass (Central Interchange)



TASK filters: 3 Months, Not HL.

Activity ID	Activity Name	Original Durati...	Start	Finish	Total Float	2012				
						Aug	Sep	Oct	Nov	
1661	ELS - ELS CWB CH1580-CH1646 Portion Re-submit Design	15	03-Jun-12 A	17-Aug-12 A						
1662	ELS - ELS CWB CH1580-CH1646 Portion Re-submit Design Engineer Review & Comment	12	18-Aug-12 A	29-Aug-12	92					
<b>ELS - CWB CRIII Portion (CH1685 - CH1704)</b>										
1695	ELS - ELS CRIII Portion Resubmit Design	28	20-Jul-12 A	24-Aug-12	241					
1696	ELS - ELS CRIII Portion Design Engineer Review & Approve	28	25-Aug-12	21-Sep-12	241					
<b>ELS - Retaining Wall</b>										
1169	ELS - ELS Retaining Wall VI Portion Prepare Design	52	20-Aug-12	10-Oct-12	548					
1170	ELS - ELS Retaining Wall VI Portion Prepare Method Statement	15	13-Oct-12	27-Oct-12	548					
1171	ELS - ELS Retaining Wall VI Portion ICE Check & Endorse	15	28-Oct-12	11-Nov-12	548					
1173	ELS - ELS Retaining Wall VI Portion Engineer Review & Approve Design	28	12-Nov-12	09-Dec-12	548					
<b>Procurement, Shop Drawing, Manufacture &amp; Delivery</b>										
<b>Excavation &amp; Lateral Support</b>										
1172	ELS - Wailing & Shoring Material Sourcing, Procurement and Delivery (Retaining Wall)	60	11-Oct-12	09-Dec-12	548					
1126	ELS - Wailing & Shoring Material Sourcing, Procurement and Delivery (Man Yiu St.)	60	30-Oct-12	28-Dec-12	13					
<b>Cut &amp; Cover Tunnel</b>										
3812	Falsework and Formwork for Cut & Cover Tunnel Shop Drawing	28	31-Aug-12	27-Sep-12	25					
3814	Falsework and Formwork for Cut & Cover Tunnel Material Procurment	28	28-Sep-12	25-Oct-12	25					

- Current Milestone
- Critical Remaining Work
- Level of Effort
- Remaining Work
- Baseline Milestone
- Project Baseline
- Actual Work

## Leighton Contractors (Asia) Limited Programme Update 23 (Aug 2012) THREE MONTH ROLLING

Project ID: U023  
 Baseline: DCP4-2  
 Layout: Update Three Month Rolling U023  
 Page 4 of 12

U023 Programme Update 23 (Aug 2012)			
Date	Revision	Checked	Approv...
21-Aug-12	U023	RC	RW
21-Jul-12	U022	RC	RW

Data Date: 20-Aug-12  
 Print Date: 25-Aug-12

# HY/2009/18 Central - Wan Chai Bypass (Central Interchange)



TASK filters: 3 Months, Not HL.

Activity ID	Activity Name	Original Durati...	Start	Finish	Total Float	2012				
						Aug	Sep	Oct	Nov	
3810	Falsework and Formwork for Cut & Cover Tunnel Off-site Fabrication	24	26-Oct-12	18-Nov-12	25					
<b>Overhead Ventilation Duct</b>										
1660	OHVD - Mobilization & Yard Preparation & Trial Panel	30	15-Jun-12 A	20-Aug-12 A						
3815	OHVD - Manufacture Precast Panels (~150#)	76	20-Aug-12	03-Nov-12	39					
1627	OHVD - Manufacture Precast Panels (~450#)	92	04-Nov-12	03-Feb-13	39					
<b>Bored Piling</b>										
3820	BP - Tender / Award Pre-bored H Pile Subcontract	30	20-Jun-12 A	31-Aug-12	791					
<b>Post-tensioning</b>										
3830	PT - Tender / Award Bridge Post-tensioning Subcontract	60	03-Nov-12	01-Jan-13	334					
<b>Bridge Bearings</b>										
3843	BEAR - Prepare & Submit Design & Particulars of Bearings	30	03-Nov-12	02-Dec-12	334					
<b>Utilities Support Bridge (Man Yiu Street)</b>										
3923	USB - Utilities Support Bridge Manufacture and Delivery, Mobilization	57	08-Jun-12 A	03-Oct-12	56					
<b>Establishment, Mobilisation &amp; Advanced Works</b>										
<b>Instrumentation and Monitoring</b>										
3012	INS - Portion VI Install Instrumentation	54	12-Nov-12	16-Jan-13	449					
<b>SECTION 3A - ALL TUNNEL WORKS IN PORTION IIIB</b>										

- ◆ Current Milestone
- Critical Remaining Work
- ▬ Level of Effort
- ▬ Remaining Work
- ▲ Baseline Milestone
- ▬ Project Baseline
- ▬ Actual Work

## Leighton Contractors (Asia) Limited Programme Update 23 (Aug 2012) THREE MONTH ROLLING

Project ID: U023  
 Baseline: DCP4-2  
 Layout: Update Three Month Rolling U023  
 Page 5 of 12

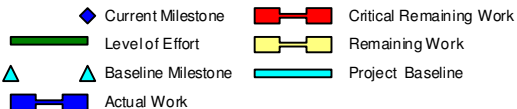
U023 Programme Update 23 (Aug 2012)			
Date	Revision	Checked	Approv...
21-Aug-12	U023	RC	RW
21-Jul-12	U022	RC	RW

# HY/2009/18 Central - Wan Chai Bypass (Central Interchange)



TASK filters: 3 Months, Not HL.

Activity ID	Activity Name	Original Durati...	Start	Finish	Total Float	2012					
						Aug	Sep	Oct	Nov		
<b>CWB Tunnel - CH1704 to CH1825</b>											
CWB Tunnel Internal Works											
1410	1704-1825 - Drill & Fix Rebar	7	15-Oct-12	22-Oct-12	1236						
<b>CWB Tunnel - CH1685 to CH1704</b>											
CWB Tunnel Structure											
1340	1685-1695 - Construct D-Wall Barrettes	38	26-Apr-12 A	29-Aug-12	89						
1342	1685-1704 - Sonic Test, Interface Core Test & Full Core Test	24	11-Jul-12 A	07-Sep-12	194						
1635	1685-1695 - Construct D-Wall Barrettes (W1D34)	17	16-Jul-12 A	15-Aug-12 A							
1197	1685-1695 - Construct D-Wall Barrettes (W2D33)	18	20-Jul-12 A	07-Aug-12 A							
1634	1685-1695 - Construct D-Wall Barrettes (BC20)	18	08-Aug-12 A	29-Aug-12	190						
<b>SECTION 3B - ALL TUNNEL WORKS IN PORTION IIIC</b>											
<b>CWB Tunnel - CH1825 to CH2600</b>											
CWB Tunnel Internal Works											
1370	1825-2600 - Drill & Fix Rebar Ch2600-2300	50	01-Jun-12 A	18-Aug-12 A							
1733	1825-2600 - Drill & Fix Rebar Ch2300 - 2000	30	27-Aug-12	29-Sep-12	1189						
1380	1825-2600 - Prepare CJ Ch2600 - 2300	40	29-Aug-12	16-Oct-12	50						
1372	1825-2600 - Drill & Fix Rebar Ch2000 - 1825	10	03-Oct-12	13-Oct-12	1219						



## Leighton Contractors (Asia) Limited Programme Update 23 (Aug 2012) THREE MONTH ROLLING

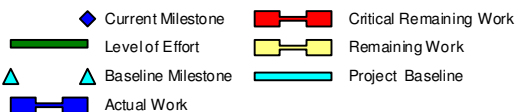
Project ID: U023  
 Baseline: DCP4-2  
 Layout: Update Three Month Rolling U023  
 Page 6 of 12

U023 Programme Update 23 (Aug 2012)			
Date	Revision	Checked	Approv...
21-Aug-12	U023	RC	RW
21-Jul-12	U022	RC	RW

## HY/2009/18 Central - Wan Chai Bypass (Central Interchange)

TASK filters: 3 Months, Not HL.

Activity ID	Activity Name	Original Durati...	Start	Finish	Total Float	2012				
						Aug	Sep	Oct	Nov	
1744	1825-2600 - Prepare CJ Ch2300 - 2000	40	17-Oct-12	03-Dec-12	1177					
1390	1825-2600 - Erect Precast Slab & Stitching & Construct Kicker Ch2600 - 2300	86	12-Nov-12	01-Mar-13	29					
<b>SECTION 4B - ALL TUNNEL WORKS IN PORTION IVC, IVD, IVE &amp; IVF</b>										
<b>CWB Tunnel - CH1480 to CH1580</b>										
<b>CWB Tunnel Structure</b>										
1382	1480-1580 - Breaking Unforeseeable Concrete Slab	19	03-Jul-12 A	24-Jul-12 A						
1676	1480-1580 - Erect 2nd Layer Strut (West)	21	15-Jul-12 A	01-Aug-12 A						
1420	1480-1580 - Excavate 1st Layer (East) - Remaining	19	25-Jul-12 A	09-Aug-12 A						
1673	1480-1580 - Erect 1st Layer Strut (East)	16	10-Aug-12 A	17-Aug-12 A						
1679	1480-1580 - Excavate 3rd Layer (West)	9	15-Aug-12 A	04-Sep-12	23					
1675	1480-1580 - Excavate 2nd Layer (East)	15	16-Aug-12 A	25-Aug-12	13					
1678	1480-1580 - Erect 2nd Layer Strut (East)	15	27-Aug-12	12-Sep-12	13					
1681	1480-1580 - Erect 3rd Layer Strut (West)	15	05-Sep-12	21-Sep-12	23					
1680	1480-1580 - Excavate 3rd Layer (East)	6	13-Sep-12	19-Sep-12	13					
1682	1480-1580 - Erect 3rd Layer Strut (East)	25	20-Sep-12	20-Oct-12	13					
1683	1480-1580 - Excavate 4th Layer (West)	13	22-Sep-12	09-Oct-12	23					
1684	1480-1580 - Erect 4th Layer Strut (West)	11	10-Oct-12	22-Oct-12	23					



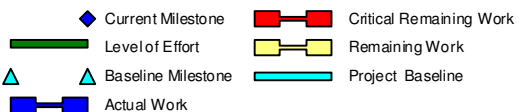
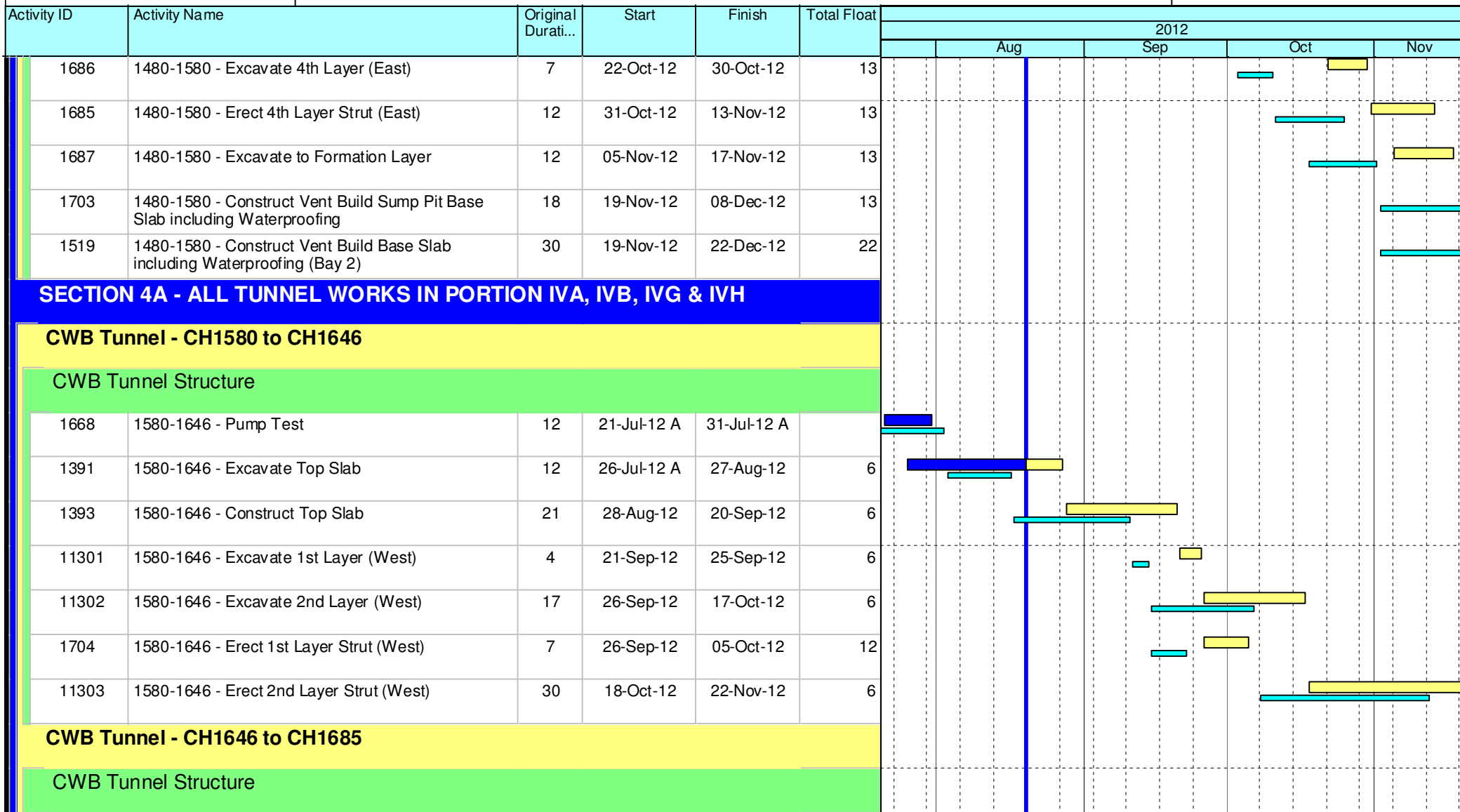
### Leighton Contractors (Asia) Limited Programme Update 23 (Aug 2012) THREE MONTH ROLLING

Project ID: U023  
 Baseline: DCP4-2  
 Layout: Update Three Month Rolling U023  
 Page 7 of 12

U023 Programme Update 23 (Aug 2012)			
Date	Revision	Checked	Approv...
21-Aug-12	U023	RC	RW
21-Jul-12	U022	RC	RW

## HY/2009/18 Central - Wan Chai Bypass (Central Interchange)

TASK filters: 3 Months, Not HL.



### Leighton Contractors (Asia) Limited Programme Update 23 (Aug 2012) THREE MONTH ROLLING

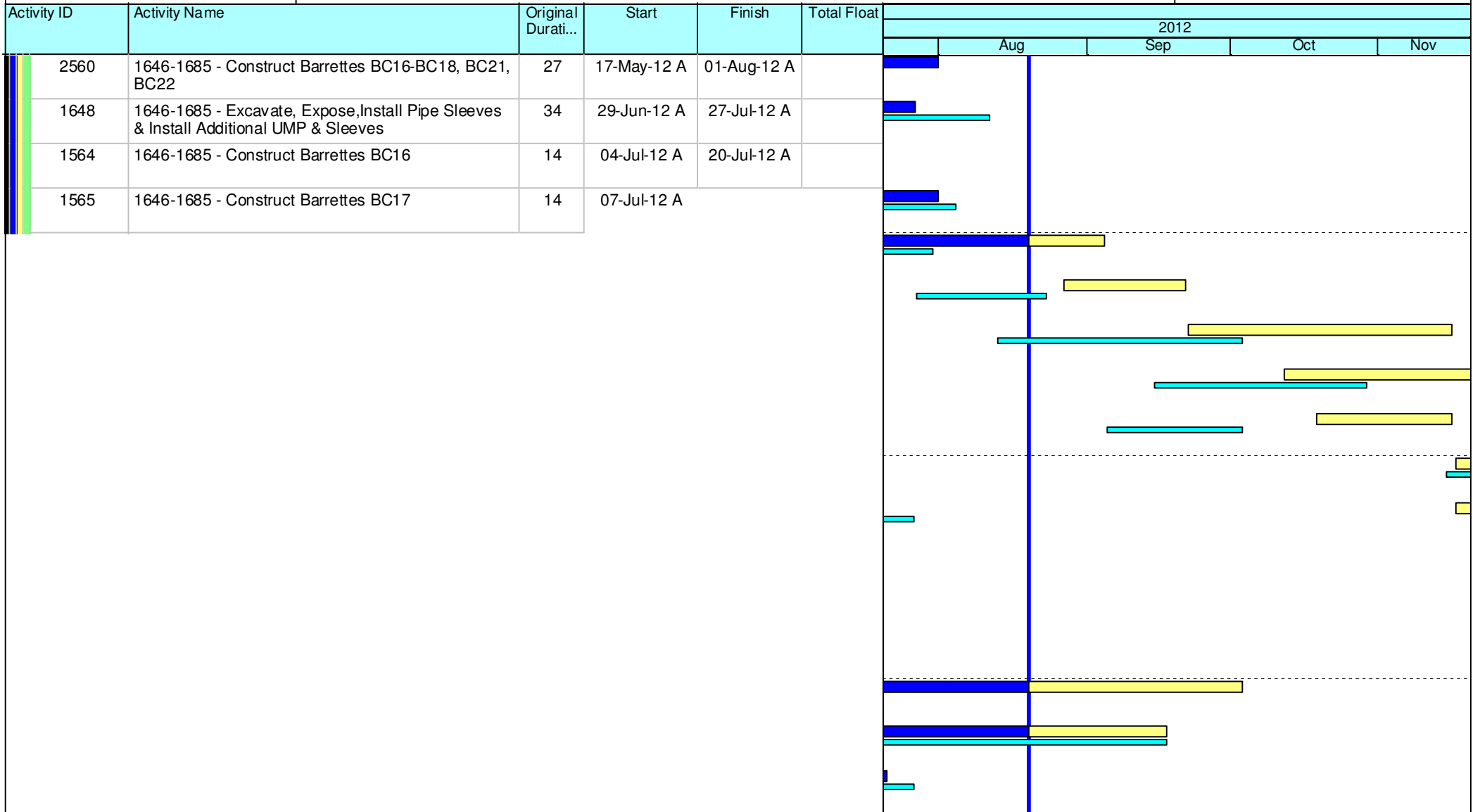
Project ID: U023  
 Baseline: DCP4-2  
 Layout: Update Three Month Rolling U023  
 Page 8 of 12

U023 Programme Update 23 (Aug 2012)			
Date	Revision	Checked	Approv...
21-Aug-12	U023	RC	RW
21-Jul-12	U022	RC	RW

Data Date: 20-Aug-12  
 Print Date: 25-Aug-12

## HY/2009/18 Central - Wan Chai Bypass (Central Interchange)

**TASK filters: 3 Months, Not HL.**



- ◆ Current Milestone
- Critical Remaining Work
- Level of Effort
- Remaining Work
- ▲ Baseline Milestone
- Project Baseline
- Actual Work

### Leighton Contractors (Asia) Limited Programme Update 23 (Aug 2012) THREE MONTH ROLLING

Project ID: U023  
 Baseline: DCP4-2  
 Layout: Update Three Month Rolling U023  
 Page 9 of 12

U023 Programme Update 23 (Aug 2012)			
Date	Revision	Checked	Approv...
21-Aug-12	U023	RC	RW
21-Jul-12	U022	RC	RW



Data Date: 20-Aug-12  
 Print Date: 25-Aug-12

## HY/2009/18 Central - Wan Chai Bypass (Central Interchange)

TASK filters: 3 Months, Not HL.

Activity ID	Activity Name	Original Durati...	Start	Finish	Total Float	2012			
						Aug	Sep	Oct	Nov
2120	MKSVWB - Roadworks	62	28-Aug-12	10-Nov-12	250	[Gantt bars for 2120]			
2130	MKSVWB - Finishes & Landscaping	50	12-Nov-12	11-Jan-13	523	[Gantt bars for 2130]			
<b>CWB Trough B - CH1360 to CH1480</b>									
Trough Structure									
Trough Phase 1									
1267	TRB - Lateral Support - Phase 1 North Portion	21	26-Jul-12 A	31-Aug-12	63	[Gantt bars for 1267]			
1389	TRB - Excavate - Phase 1 North Portion	28	01-Sep-12	05-Oct-12	63	[Gantt bars for 1389]			
1268	TRB - Construct Trough Slab - Phase 1 North Porti...	30	06-Oct-12	10-Nov-12	63	[Gantt bars for 1268]			
11640	TRB - Excavate 3rd Layer (Ch1480 Corner)	6	20-Sep-12	26-Sep-12	6	[Gantt bars for 11640]			
11650	TRB - Erect 3rd Layer Support (1 Strut)	8	27-Sep-12	08-Oct-12	6	[Gantt bars for 11650]			

- ◆ Current Milestone
- Critical Remaining Work
- Level of Effort
- Remaining Work
- ▲ Baseline Milestone
- Project Baseline
- Actual Work

### Leighton Contractors (Asia) Limited Programme Update 23 (Aug 2012) THREE MONTH ROLLING

Project ID: U023  
 Baseline: DCP4-2  
 Layout: Update Three Month Rolling U023  
 Page 10 of 12

U023 Programme Update 23 (Aug 2012)			
Date	Revision	Checked	Approv...
21-Aug-12	U023	RC	RW
21-Jul-12	U022	RC	RW

## HY/2009/18 Central - Wan Chai Bypass (Central Interchange)

TASK filters: 3 Months, Not HL.

Activity ID	Activity Name	Original Durati...	Start	Finish	Total Float	2012				
						Aug	Sep	Oct	Nov	Dec
11660	TRB - Excavate 4th Layer (Ch1480 Corner)	4	09-Oct-12	12-Oct-12	43					
1350	TRB - Erect 1st Layer Support (1 Strut)	8	09-Oct-12	17-Oct-12	6					
1360	TRB - Excavate 2nd Layer (Remaining)	12	18-Oct-12	01-Nov-12	6					
1385	TRB - Erect 2nd Layer Support (2 Struts)	13	02-Nov-12	16-Nov-12	6					
1394	TRB - Excavate 3rd Layer (Remaining)	15	17-Nov-12	04-Dec-12	6					
<b>SECTION 6 - ALL WORKS IN PORTION VI</b>										
<b>Bridge B</b>										
Preliminaries										
2159	BRB - Implement Localised TTA	12	12-Nov-12	24-Nov-12	272					
<b>General Surface Works</b>										
Formation & Roadworks - Man Kwong Street West Bound										
2502	MKSVIWB - Tree Transplanting / Felling	25	30-Jan-12 A	03-Oct-12	243					
2510	MKSVIWB - U/G Drainage & Ducts	50	17-Apr-12 A	17-Sep-12	225					
1576	MKSVIWB - Gas Main Installation	81	24-Apr-12 A	21-Jul-12 A						
2520	MKSVIWB - Roadworks	62	28-Aug-12	10-Nov-12	225					
2530	MKSVIWB - Finishes & Landscaping	50	12-Oct-12	10-Dec-12	225					
Retaining Wall G										

- ◆ Current Milestone
- Critical Remaining Work
- ▬ Level of Effort
- ▬ Remaining Work
- ▲ Baseline Milestone
- ▬ Project Baseline
- ▬ Actual Work

### Leighton Contractors (Asia) Limited Programme Update 23 (Aug 2012) THREE MONTH ROLLING

Project ID: U023  
 Baseline: DCP4-2  
 Layout: Update Three Month Rolling U023  
 Page 11 of 12








U023 Programme Update 23 (Aug 2012)			
Date	Revision	Checked	Approv...
21-Aug-12	U023	RC	RW
21-Jul-12	U022	RC	RW

Data Date: 20-Aug-12  
 Print Date: 25-Aug-12

## HY/2009/18 Central - Wan Chai Bypass (Central Interchange)

TASK filters: 3 Months, Not HL.

Activity ID	Activity Name	Original Durati...	Start	Finish	Total Float	2012					
						Aug	Sep	Oct	Nov		
2798	RWG - Implement Localised TTA on Finance Street	24	12-Nov-12	08-Dec-12	434						
<b>Bridge A</b>											
Preliminaries											
2250	BRA - Site Clearance	56	16-Jun-12 A	29-Sep-12	283						

-  Current Milestone
-  Critical Remaining Work
-  Level of Effort
-  Remaining Work
-  Baseline Milestone
-  Project Baseline
-  Actual Work

### Leighton Contractors (Asia) Limited Programme Update 23 (Aug 2012) THREE MONTH ROLLING

Project ID: U023  
 Baseline: DCP4-2  
 Layout: Update Three Month Rolling U023  
 Page 12 of 12

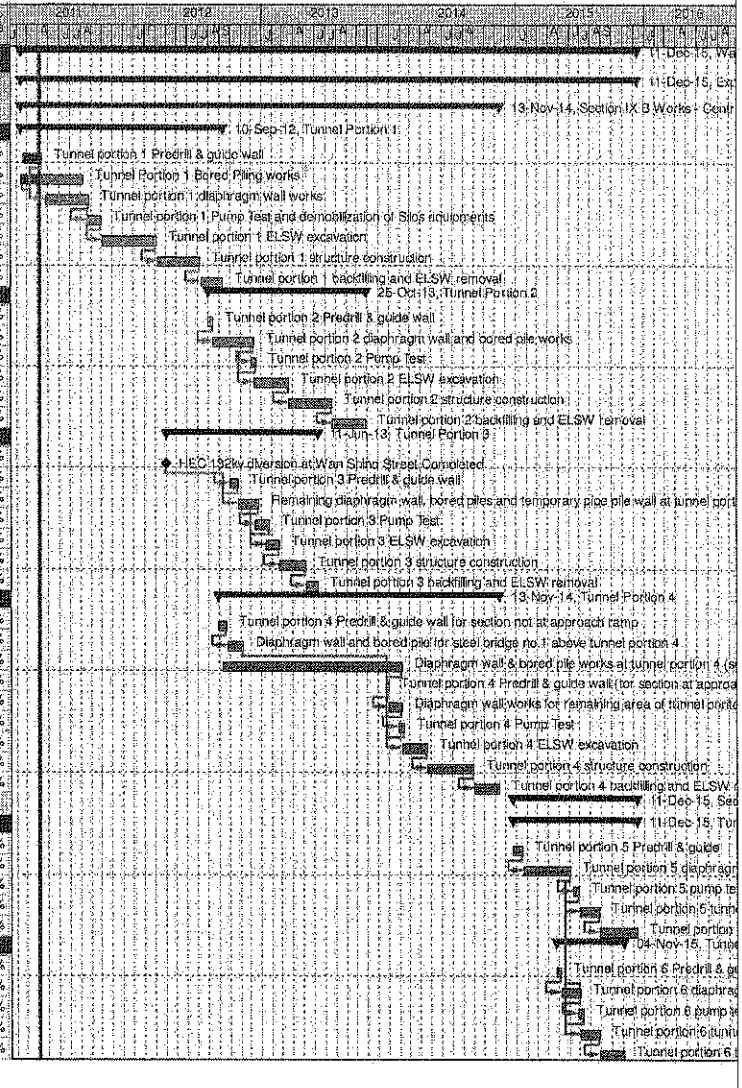
U023 Programme Update 23 (Aug 2012)			
Date	Revision	Checked	Approv...
21-Aug-12	U023	RC	RW
21-Jul-12	U022	RC	RW



Wan Chai Development Phase II - Central - Wan Chai  
Bypass at Wan Chai East CONTRACT HK/2009/02

CHUN WO - CRGL JV

Activity ID	Activity Name	OD	Start	Finish	% Planned	2011	2012	2013	2014	2015	2016
<b>Wan Chai Development Phase II - Central - Wan Chai Bypass at Wan Chai East</b>											
<b>Expanded and More Detailed Initial Works Programme</b>											
Section IX B Works - Central - Wan Chai Bypass Tunnel Structure from chainage 3400 to eastern tunnel											
<b>Tunnel Portion 1</b>											
S9B-T1-0005	Tunnel portion 1 Predrill & guide wall	10	18-Feb-11	13-Apr-11	40%						
S9B-T1-0007	Tunnel Portion 1 Bored Piling works	105	09-Feb-11	08-Aug-11	0%						
S9B-T1-0010	Tunnel portion 1 diaphragm wall works	105	26-Apr-11	27-Aug-11	0%						
S9B-T1-0015	Tunnel portion 1 Pump Test and demobilization of Slos equipments	35	20-Aug-11	30-Sep-11	0%						
S9B-T1-0020	Tunnel portion 1 ELSW excavation	130	03-Oct-11	07-Mar-12	0%						
S9B-T1-0030	Tunnel portion 1 structure construction	100	09-Mar-12	09-Jul-12	0%						
S9B-T1-0040	Tunnel portion 1 backfilling and ELSW removal	54	10-Jul-12	10-Sep-12	0%						
<b>Tunnel Portion 2</b>											
S9B-T2-0105	Tunnel portion 2 Predrill & guide wall	10	02-Aug-12	13-Aug-12	0%						
S9B-T2-0010	Tunnel portion 2 diaphragm wall and bored pile works	100	14-Aug-12	10-Dec-12	0%						
S9B-T2-0015	Tunnel portion 2 Pump Test	14	03-Dec-12	18-Dec-12	0%						
S9B-T2-0020	Tunnel portion 2 ELSW excavation	80	11-Dec-12	19-Mar-13	0%						
S9B-T2-0030	Tunnel portion 2 structure construction	100	20-Mar-13	22-Jul-13	0%						
S9B-T2-0040	Tunnel portion 2 backfilling and ELSW removal	80	23-Jul-13	25-Oct-13	0%						
<b>Tunnel Portion 3</b>											
S9B-T3-0005	HEC 132kv diversion at Wan Shing Street Completed	0	01-Apr-12*		0%						
S9B-T3-0008	Tunnel portion 3 Predrill & guide wall	20	02-Oct-12	25-Oct-12	0%						
S9B-T3-0010	Remaining diaphragm wall, bored piles and temporary pipe pile wall at tunnel portion 3.	50	25-Oct-12	22-Dec-12	0%						
S9B-T3-0015	Tunnel portion 3 Pump Test	30	15-Dec-12	22-Jan-13	0%						
S9B-T3-0020	Tunnel portion 3 ELSW excavation	30	15-Jan-13	20-Feb-13	0%						
S9B-T3-0030	Tunnel portion 3 structure construction	80	21-Feb-13	08-May-13	0%						
S9B-T3-0040	Tunnel portion 3 backfilling and ELSW removal	30	07-May-13	11-Jun-13	0%						
<b>Tunnel Portion 4</b>											
S9B-T4-0005	Tunnel portion 4 Predrill & guide wall for section not at approach ramp	21	30-Aug-12	22-Sep-12	0%						
S9B-T4-0010	Diaphragm wall and bored pile for steel bridge no.1 above tunnel portion 4	40	24-Sep-12	10-Nov-12	0%						
S9B-T4-0020	Diaphragm wall & bored pile works at tunnel portion 4 (section not at approach ramp)	420	11-Sep-12	05-Feb-14	0%						
S9B-T4-0025	Tunnel portion 4 Predrill & guide wall (for section at approach ramp)	5	23-Dec-13	30-Dec-13	0%						
S9B-T4-0030	Diaphragm wall works for remaining area of tunnel portion 4 (for section at approach ramp)	30	31-Dec-13	06-Feb-14	0%						
S9B-T4-0035	Tunnel portion 4 Pump Test	14	28-Jan-14	14-Feb-14	0%						
S9B-T4-0040	Tunnel portion 4 ELSW excavation	60	07-Feb-14	19-Apr-14	0%						
S9B-T4-0050	Tunnel portion 4 structure construction	110	22-Apr-14	01-Sep-14	0%						
S9B-T4-0060	Tunnel portion 4 backfilling and ELSW removal	60	02-Sep-14	13-Nov-14	0%						
Section X Works - Central - Wan Chai Bypass Tunnel Structure from western tunnel to chainage 3400											
<b>Tunnel Portion 5</b>											
S10-T5-0005	Tunnel portion 5 Predrill & guide	21	23-Dec-14	19-Jan-15	0%						
S10-T5-0010	Tunnel portion 5 diaphragm wall & bored pile works	110	20-Jan-15	04-Jun-15	0%						
S10-T5-0015	Tunnel portion 5 pump test	14	13-Jun-15	30-Jun-15	0%						
S10-T5-0020	Tunnel portion 5 tunnel ELSW excavation	45	04-Jul-15	25-Aug-15	0%						
S10-T5-0030	Tunnel portion 5 tunnel structure construction	90	26-Aug-15	11-Dec-15	0%						
<b>Tunnel Portion 6</b>											
S10-T6-0040	Tunnel portion 6 Predrill & guide	12	24-Apr-15	08-May-15	0%						
S10-T6-0050	Tunnel portion 6 diaphragm wall & bored pile works at Area 10	45	09-May-15	09-Jul-15	0%						
S10-T6-0055	Tunnel portion 6 pump test	14	25-Jun-15	11-Jul-15	0%						
S10-T6-0060	Tunnel portion 6 tunnel ELSW excavation at Area 10	45	04-Jul-15	25-Aug-15	0%						
S10-T6-0070	Tunnel portion 6 tunnel structure construction at Area 10	58	26-Aug-15	04-Nov-15	0%						



後和 - 中國中鐵聯合  
 Chun Wo - CRGL JOINT VENTURE

Remaining Level of Effort Milestone   
 Actual Level of Effort Summary   
 Actual Work   
 Remaining Work   
 Critical Remaining Work

CEDD CONTRACT NO. HK/2009/02  
 Wan Chai Development Phase II - Central Wan Chai Bypass at Wan Chai East (Contract 2)  
 Revised Programme dated 7 April 2011

Date	Revision	Checked	Approved
07-Apr-11		KT	KY

Page 10 of 11

Activity ID	Activity Name	Rem Dur	Start	Finish	2012																	
					June					July					August				September			
					21	28	04	11	18	25	02	09	16	23	30	06	13	20	27	03	10	17
<b>3MRP - JUN 2012 to SEP 2012</b>																						
<b>01 - CONTRACT DATES</b>																						
<b>01.2 - Possession of Site</b>																						
0120-2600	Possession to Portion VIIIA	0	29-Jul-12*																		◆ Possession to Portion VIIIA	
0120-2700	Possession to Portion VIIIB	0	29-Jul-12*																		◆ Possession to Portion VIIIB	
0120-2800	Possession to Portion IXA	0	29-Jul-12*																		◆ Possession to Portion IXA	
0120-2900	Possession to Portion IXB	0	29-Jul-12*																		◆ Possession to Portion IXB	
<b>02 - PRE-CONSTRUCTION WORKS</b>																						
<b>02.2 - Contractor's Submission</b>																						
0220-1250	Concrete Ready Mix/Design Mix - Concrete Plant Trials & Approval	8	04-Aug-11 A	27-Jun-12																		
0220-1300	Drainage Pipes & Materials - Procurement & Delivery	14	20-Jun-12	03-Jul-12																		
0220-1360	Tunnel Structures Materials - Submission	28	02-Jul-12*	29-Jul-12																		
0220-1370	Tunnel Structures Materials - ER Review/Comment	28	30-Jul-12	26-Aug-12																		
0220-1380	Tunnel Structures Materials - Resubmission	14	27-Aug-12	09-Sep-12																		
0220-1390	Tunnel Structures Materials - ER Approval	21	10-Sep-12	30-Sep-12																		
0220-1460	Bridge Bearing - Submission	15	10-Oct-11 A	15-Aug-12																		
0220-1470	Bridge Bearing - ER Review/Comment	28	16-Aug-12	12-Sep-12																		
0220-1510	Road Work Materials/Street Furnitures - Submission	75	01-Sep-12*	14-Nov-12																		
<b>02.3 - Method Statement / Shop Drawings</b>																						
0230-1260	MS Cut & Cover Tunnel - Submission	14	21-Mar-12 A	03-Jul-12																		
0230-1270	MS Cut & Cover Tunnel - ER Review & Comment	28	04-Jul-12	31-Jul-12																		
0230-1280	MS Cut & Cover Tunnel - Resubmission	28	01-Aug-12	28-Aug-12																		
0230-1290	MS Cut & Cover Tunnel - ER Approval	28	29-Aug-12	25-Sep-12																		
0230-1340	MS Pre-cast Segment Bridge - Submission	28	01-Aug-12*	28-Aug-12																		
0230-1350	MS Pre-cast Segment Bridge - ER Review & Comment	28	29-Aug-12	25-Sep-12																		
0230-1460	MS Stressing/Destressing Tendons - Submission	28	01-Aug-12*	28-Aug-12																		
0230-1470	MS Stressing/Destressing Tendons - ER Review & Comment	28	29-Aug-12	25-Sep-12																		
0230-1560	MS Precasting of Bridge Segment & Beam - Resubmission	9	02-Apr-12 A	28-Jun-12																		
0230-1570	MS Precasting of Bridge Segment & Beam - ER Approval	20	12-Apr-12 A	09-Jul-12																		
0230-1700	MS Temporary Bridge TA - Submission	28	01-Aug-12*	28-Aug-12																		
0230-1710	MS Temporary Bridge TA - ER Review & Comment	28	29-Aug-12	25-Sep-12																		
0230-1580	MS Interim & Permanent Noise Semi Enclosure - Submission	28	11-Sep-12	08-Oct-12																		
<b>02.4 - Contractor's Design and Build Items</b>																						
0240-1010	Temp Bridge "TA" Design - Prep & Submit	36	16-Dec-11 A	25-Jul-12																		
0240-1020	Temp Bridge "TA" Design - ER review and comment	28	26-Jul-12	22-Aug-12																		
0240-1030	Temp Bridge "TA" Design - Resubmission	60	23-Aug-12	21-Oct-12																		
0240-1041	Temp Bridge "TD" Design - Prep & Submit	120	01-Aug-12*	28-Nov-12																		
0240-1090	Int. Noise Enclosure Design - Public Consultation	45	29-Jul-11 A	03-Aug-12																		
0240-1095	Int. Noise Enclosure Design - ACABAS/ER Consultation/Submission	63	16-Dec-11 A	21-Aug-12																		
0240-1100	Int. Noise Enclosure Design - ER review & comment	28	22-Aug-12	18-Sep-12																		
0240-1120	Noise Barrier Design - Public Consultation	45	29-Jul-11 A	03-Aug-12																		
0240-1122	Noise Barrier Design - ACABAS/ER Consultation/Submission	63	16-Dec-11 A	21-Aug-12																		
0240-1124	Noise Barrier Design - ER review & comment	28	22-Aug-12	18-Sep-12																		
0240-1130	Perm. Noise Enclosure Design - Public Consultation	126	14-Feb-12 A	23-Oct-12																		

- Remaining Level of Effort
- Actual Level of Effort
- Actual Work
- Remaining Work
- Critical Remaining Work
- ◆ Milestone

**Contract HY/2009/19**

**Three Month Rolling Programme (20 JUN 2012 to 19 SEP 2012)**

3MRP

3MRP - JUN 2012 to SEP 2012

Page 1 of 7



Activity ID	Activity Name	Rem Dur	Start	Finish	2012																
					June					July					August					September	
					21	28	04	11	18	25	02	09	16	23	30	06	13	20	27	03	10
0240-1135	Perm. Noise Enclosure Design - ACABAS/ER Consultation/Submission	90	20-Jun-12	17-Sep-12	[Gantt bar: 20-Jun-12 to 17-Sep-12]																
0240-1260	Landscaping Design - Public Consultation	180	12-Aug-12	07-Feb-13	[Gantt bar: 12-Aug-12 to 07-Feb-13]																
0240-1050	Temp Bridge "TB" & "TC" Design - Prep & Submit	120	01-Sep-12*	29-Dec-12	[Gantt bar: 01-Sep-12 to 29-Dec-12]																
<b>02.5 - Bridge Segment/Beam Off-site Precasting</b>																					
0250-1030	Segment/Beam - Precast Yard Establishment Works	25	21-May-12 A	15-Jul-12	[Gantt bar: 21-May-12 to 15-Jul-12]																
0250-1050	Segment/Beam - Mould Fabrication	34	14-May-12 A	23-Jul-12	[Gantt bar: 14-May-12 to 23-Jul-12]																
0250-1100	Segment/Beam - Geometry Control Design Approval	20	14-Dec-11 A	09-Jul-12	[Gantt bar: 14-Dec-11 to 09-Jul-12]																
0250-1040	Segment/Beam - Precast Yard Set-up Survey Station	18	27-Jun-12	15-Jul-12	[Gantt bar: 27-Jun-12 to 15-Jul-12]																
0250-1060	Segment/Beam - Precasting of 1st Segment / Trial Segment	12	23-Jul-12	04-Aug-12	[Gantt bar: 23-Jul-12 to 04-Aug-12]																
0250-1500	Ready for Mass Production of Bridge Segment/Beam	0		04-Aug-12	[Milestone: 04-Aug-12]																
0250-1600	Bridge Precast Segment Casting & Delivery for E/B Bridge	280	04-Aug-12	11-May-13	[Gantt bar: 04-Aug-12 to 11-May-13]																
<b>05 - SECTION 2 &amp; 2A OF THE WORKS</b>																					
<b>05.1 - Cut &amp; Cover Tunnel Ch 4855-4932 (APS Footprint)</b>																					
<b>05.1.1 - D-Wall Construction</b>																					
0511-1010	Site Survey & Setting Out (Portion VIIIA and IXA)	3	30-Jul-12	01-Aug-12	[Gantt bar: 30-Jul-12 to 01-Aug-12]																
0511-1020	Site Establishment (Portion VIIIA and IXA)	28	30-Jul-12	30-Aug-12	[Gantt bar: 30-Jul-12 to 30-Aug-12]																
0511-1085	D-Wall G.I. N46-N51/S48-S55/BC39 Prelim Report / Founding Level	15	17-Aug-12	03-Sep-12	[Gantt bar: 17-Aug-12 to 03-Sep-12]																
0511-1090	D-Wall G.I. N46-N51/S48-S55/BC39 Final Report / Founding Level	42	04-Sep-12	24-Oct-12	[Gantt bar: 04-Sep-12 to 24-Oct-12]																
0511-1030	D-wall N46-N51 Pre-drilling (6 nos@6d - 3 rigs)	12	31-Jul-12	13-Aug-12	[Gantt bar: 31-Jul-12 to 13-Aug-12]																
0511-1035	D-wall N46-N51 Grouting for Existing Seawall Rubble Mound	18	14-Aug-12	03-Sep-12	[Gantt bar: 14-Aug-12 to 03-Sep-12]																
0511-1040	D-wall N46-N51 Guide Wall	12	04-Sep-12	17-Sep-12	[Gantt bar: 04-Sep-12 to 17-Sep-12]																
0511-1060	D-wall S48-S55 + BC39 Pre-drilling (9 nos@3d - 3 rigs)	15	31-Jul-12	16-Aug-12	[Gantt bar: 31-Jul-12 to 16-Aug-12]																
0511-1065	D-wall S48-S55 + BC39 Guide Wall	12	17-Aug-12	30-Aug-12	[Gantt bar: 17-Aug-12 to 30-Aug-12]																
0511-1075	Barrette BC39 Grouting for Existing Seawall Rubble Mound	6	31-Aug-12	06-Sep-12	[Gantt bar: 31-Aug-12 to 06-Sep-12]																
0511-1070	D-wall S48-S55 Construction (8 nos@6d - 1 set)	56	07-Sep-12	13-Nov-12	[Gantt bar: 07-Sep-12 to 13-Nov-12]																
0511-1080	Barrette BC39 Construction (1 no@6d - 1 set)	7	07-Sep-12	14-Sep-12	[Gantt bar: 07-Sep-12 to 14-Sep-12]																
<b>05.2 - Cut &amp; Cover Tunnel Ch 4932-5149</b>																					
<b>05.2.1 - D-Wall Construction</b>																					
0521-1790.10	D-wall Panel N74A (6m - 590cu.m)	10	18-Jun-12 A	03-Jul-12	[Gantt bar: 18-Jun-12 to 03-Jul-12]																
0521-1990.53	Existing Utilities Diversion for S81 to S84	0	21-May-12 A	06-Jun-12 A	[Gantt bar: 21-May-12 to 06-Jun-12]																
0521-1990.63	Guide Wall Construction for S81 to S84	7	07-Jun-12 A	28-Jun-12	[Gantt bar: 07-Jun-12 to 28-Jun-12]																
0521-1990.25	D-wall South Panel S93	0	22-May-12 A	05-Jun-12 A	[Gantt bar: 22-May-12 to 05-Jun-12]																
0521-1990.28	D-wall South Panel S88	0	26-May-12 A	11-Jun-12 A	[Gantt bar: 26-May-12 to 11-Jun-12]																
0521-1990.29	D-wall South Panel S85	0	14-May-12 A	28-May-12 A	[Gantt bar: 14-May-12 to 28-May-12]																
0521-1990.26	D-wall South Panel S89	14	18-Jun-12 A	07-Jul-12	[Gantt bar: 18-Jun-12 to 07-Jul-12]																
0521-1990.33	D-wall South Panel S84	2	11-Jun-12 A	21-Jun-12	[Gantt bar: 11-Jun-12 to 21-Jun-12]																
0521-1990.20	D-wall South Panel S83	10	28-Jun-12	11-Jul-12	[Gantt bar: 28-Jun-12 to 11-Jul-12]																
0521-1990.27	D-wall South Panel S81	10	11-Jul-12	23-Jul-12	[Gantt bar: 11-Jul-12 to 23-Jul-12]																
0521-1990.24	D-wall South Panel S82	10	23-Jul-12	03-Aug-12	[Gantt bar: 23-Jul-12 to 03-Aug-12]																
0521-1945.10	Temp Bulk Headhead TBW1	7	03-Aug-12	11-Aug-12	[Gantt bar: 03-Aug-12 to 11-Aug-12]																
0521-1945.15	Temp Bulk Headhead TBW3	7	11-Aug-12	20-Aug-12	[Gantt bar: 11-Aug-12 to 20-Aug-12]																
0521-1945.20	Temp Bulk Headhead TBW5	7	20-Aug-12	28-Aug-12	[Gantt bar: 20-Aug-12 to 28-Aug-12]																
0521-1945.25	Temp Bulk Headhead TBW2	7	28-Aug-12	05-Sep-12	[Gantt bar: 28-Aug-12 to 05-Sep-12]																
0521-1945.30	Temp Bulk Headhead TBW4	7	05-Sep-12	13-Sep-12	[Gantt bar: 05-Sep-12 to 13-Sep-12]																

- Remaining Level of Effort
- Actual Level of Effort
- Actual Work
- Remaining Work
- Critical Remaining Work
- ◆ Milestone

**Contract HY/2009/19**

**Three Month Rolling Programme (20 JUN 2012 to 19 SEP 2012)**

3MRP

3MRP - JUN 2012 to SEP 2012

Activity ID	Activity Name	Rem Dur	Start	Finish	2012																
					June					July					August					September	
					21	28	04	11	18	25	02	09	16	23	30	06	13	20	27	03	10
0521-1810	D-wall N59-N70 Grouting for Existing Seawall Rubble Mound	0	27-Apr-12 A	05-Jun-12 A	D-wall N59-N70 Grouting for Existing Seawall Rubble Mound																
0521-1840	D-wall N52-N58 Pre-drilling (7 nos@6d - 2 rig)	0	09-Apr-12 A	30-May-12 A	D-wall N52-N58 Pre-drilling (7 nos@6d - 2 rig)																
0521-1850	D-wall N52-N58 Grouting for Existing Seawall Rubble Mound	0	03-May-12 A	05-Jun-12 A	D-wall N52-N58 Grouting for Existing Seawall Rubble Mound																
0521-1860	D-wall N52-N58 Guide Wall	0	31-May-12 A	13-Jun-12 A	D-wall N52-N58 Guide Wall																
0521-1820	D-wall N59-N70 Guide Wall	6	09-Apr-12 A	27-Jun-12	D-wall N59-N70 Guide Wall																
0521-1830.15	D-wall Panel N69 (6m - 621cu.m)	0	09-May-12 A	02-Jun-12 A	D-wall Panel N69 (6m - 621cu.m)																
0521-1830.10	D-wall Panel N68 (3.95m - 409cu.m)	4	05-Jun-12 A	25-Jun-12	D-wall Panel N68 (3.95m - 409cu.m)																
0521-1835.10	D-wall Panel N55 (5.6m - 529cu.m)	9	08-Jun-12 A	30-Jun-12	D-wall Panel N55 (5.6m - 529cu.m)																
0521-1830.25	D-wall Panel N67 (3.95m - 409cu.m)	10	28-Jun-12	10-Jul-12	D-wall Panel N67 (3.95m - 409cu.m)																
0521-1835.15	D-wall Panel N59 (5.6m - 529cu.m)	10	06-Jul-12	17-Jul-12	D-wall Panel N59 (5.6m - 529cu.m)																
0521-1830.35	D-wall Panel N65 (5.7m - 590cu.m)	10	11-Jul-12	21-Jul-12	D-wall Panel N65 (5.7m - 590cu.m)																
0521-1835.20	D-wall Panel N52 (5.6m - 529cu.m)	10	18-Jul-12	28-Jul-12	D-wall Panel N52 (5.6m - 529cu.m)																
0521-1830.20	D-wall Panel N70 (6m - 630cum)	10	23-Jul-12	02-Aug-12	D-wall Panel N70 (6m - 630cum)																
0521-1835.25	D-wall Panel N63 (5.6m - 529cu.m)	10	30-Jul-12	09-Aug-12	D-wall Panel N63 (5.6m - 529cu.m)																
0521-1830.30	D-wall Panel N66 (4.75m - 492cu.m)	10	06-Aug-12	16-Aug-12	D-wall Panel N66 (4.75m - 492cu.m)																
0521-1835.30	D-wall Panel N58 (5.6m - 529cu.m)	10	16-Aug-12	27-Aug-12	D-wall Panel N58 (5.6m - 529cu.m)																
0521-1835.35	D-wall Panel N62 (5.6m - 529cu.m)	10	25-Aug-12	05-Sep-12	D-wall Panel N62 (5.6m - 529cu.m)																
0521-1835.40	D-wall Panel N54 (3.77m - 355cu.m)	10	04-Sep-12	14-Sep-12	D-wall Panel N54 (3.77m - 355cu.m)																
0521-1990.36	D-wall South Panel S76	6	08-Jun-12 A	27-Jun-12	D-wall South Panel S76																
0521-2070	D-wall S66-S77 Guide Wall	9	16-May-12 A	30-Jun-12	D-wall S66-S77 Guide Wall																
0521-1990.39	D-wall South Panel S74	10	22-Jun-12	05-Jul-12	D-wall South Panel S74																
0521-1990.42	D-wall South Panel S75	0	24-May-12 A	09-Jun-12 A	D-wall South Panel S75																
0521-1990.43	D-wall South Panel S77	10	06-Jul-12	17-Jul-12	D-wall South Panel S77																
0521-1990.34	D-wall South Panel S68	10	18-Jul-12	28-Jul-12	D-wall South Panel S68																
0521-1990.40	D-wall South Panel S73	10	30-Jul-12	09-Aug-12	D-wall South Panel S73																
0521-1990.35	D-wall South Panel S69	10	07-Aug-12	17-Aug-12	D-wall South Panel S69																
0521-1990.38	D-wall South Panel S72	10	15-Aug-12	25-Aug-12	D-wall South Panel S72																
0521-1990.41	D-wall South Panel S70	10	23-Aug-12	03-Sep-12	D-wall South Panel S70																
0521-2090	D-wall S60-S65 Pre-drilling	18	27-Feb-12 A	12-Jul-12	D-wall S60-S65 Pre-drilling																
0521-2100	D-wall S60-S65 Guide Wall	15	13-Jul-12	30-Jul-12	D-wall S60-S65 Guide Wall																
0521-2130	D-wall S56-S59 Guide Wall	15	21-Jul-12	07-Aug-12	D-wall S56-S59 Guide Wall																
<b>05.2.2 - Barrette Construction</b>																					
0522-2210.57	Barrette Pile BC57	0	07-May-12 A	25-May-12 A	Barrette Pile BC57																
0522-2210.61	Barrette Pile BC61	0	21-May-12 A	31-May-12 A	Barrette Pile BC61																
0522-2210.65	Barrette Pile BC65	0	16-May-12 A	26-May-12 A	Barrette Pile BC65																
0522-2210.59	Barrette Pile BC59	2	07-Jun-12 A	21-Jun-12	Barrette Pile BC59																
0522-2210.66	Barrette Pile BC66	0	28-May-12 A	08-Jun-12 A	Barrette Pile BC66																
0522-2210.70	Barrette Pile BC62	0	01-Jun-12 A	13-Jun-12 A	Barrette Pile BC62																
0522-2210.56	Barrette Pile BC56	10	03-Jul-12	13-Jul-12	Barrette Pile BC56																
0522-2210.55	Barrette Pile BC58	10	14-Jul-12	25-Jul-12	Barrette Pile BC58																
0522-2210.58	Barrette Pile BC55	10	26-Jul-12	06-Aug-12	Barrette Pile BC55																
0522-2185	Barrette BC54 Pre-drilling	0	21-May-12 A	26-May-12 A	Barrette BC54 Pre-drilling																
0522-2190	Barrette BC54-BC56 Grouting for Existing Seawall Rubble Mound	9	20-Jun-12	30-Jun-12	Barrette BC54-BC56 Grouting for Existing Seawall Rubble Mound																
0522-2200	Barrette BC54-BC56 Guide Wall	9	25-Jun-12	05-Jul-12	Barrette BC54-BC56 Guide Wall																

- Remaining Level of Effort
- Actual Level of Effort
- Actual Work
- Remaining Work
- Critical Remaining Work
- ◆ Milestone

**Contract HY/2009/19**

**Three Month Rolling Programme (20 JUN 2012 to 19 SEP 2012)**

3MRP

3MRP - JUN 2012 to SEP 2012

Page 3 of 7



Activity ID	Activity Name	Rem Dur	Start	Finish	2012																
					June					July					August					September	
					21	28	04	11	18	25	02	09	16	23	30	06	13	20	27	03	10
0620-2355	U1 Pre-bored H-pile Bay 9-12 (16 nos/3 set) at III	0	05-Apr-12 A	04-Jun-12 A	U1 Pre-bored H-pile Bay 9-12 (16 nos/3 set) at III																
0620-2340	U1 Pre-drilling for piling for U1 (48no) (4 set) at VB,VD&III	12	10-Jan-12 A	05-Jul-12	U1 Pre-drilling for piling for U1 (48no) (4 set) at VB,VD&III																
0620-2345	U1 Pre-bored H-pile Bay 7-8 (8 nos/1 set) at VB,VD & III	30	12-Apr-12 A	26-Jul-12	U1 Pre-bored H-pile Bay 7-8 (8 nos/1 set) at VB,VD & III																
0620-2350	U1 Pre-bored H-pile Bay 1-6 (24 nos/3 set) at VB	39	04-Jun-12 A	21-Aug-12	U1 Pre-bored H-pile Bay 1-6 (24 nos/3 set) at VB																
<b>10 - SECTION X OF THE WORKS</b>																					
<b>10.1 - E/B Bridges (Bridge D, E and F)</b>																					
<b>10.1.1 - Marine Pier Construction</b>																					
<b>Pier F03 to F15</b>																					
1011-1760.70	Pier F3 Marine Bore Pile - F3-1	0	26-Apr-12 A	30-May-12 A	Pier F3 Marine Bore Pile - F3-1																
1011-1760.80	Pier F3 Marine Bore Pile - F3-5	2	01-Jun-12 A	22-Jun-12	Pier F3 Marine Bore Pile - F3-5																
1011-2090	Marine bored pile testing F3	3	02-Mar-12 A	27-Jun-12	Marine bored pile testing F3																
1011-1750.10	Pier F3 Dolphin Socketed H-Pile 1	9	14-Jul-12	25-Jul-12	Pier F3 Dolphin Socketed H-Pile 1																
1011-1750.20	Pier F3 Dolphin Socketed H-Pile 1	9	25-Jul-12	04-Aug-12	Pier F3 Dolphin Socketed H-Pile 1																
1011-1750.30	Pier F3 Dolphin Socketed H-Pile 1	9	04-Aug-12	15-Aug-12	Pier F3 Dolphin Socketed H-Pile 1																
1011-1990	Dismantle Piling Platform at Pier F3	6	15-Aug-12	22-Aug-12	Dismantle Piling Platform at Pier F3																
1011-2150	F3 Pile Cap Construction	18	22-Aug-12	12-Sep-12	F3 Pile Cap Construction																
1011-1850.10	Pier F4 Dolphin Socketed H-Pile 1	5	25-May-12 A	27-Jun-12	Pier F4 Dolphin Socketed H-Pile 1																
1011-1850.20	Pier F4 Dolphin Socketed H-Pile 2	5	04-Jun-12 A	04-Jul-12	Pier F4 Dolphin Socketed H-Pile 2																
1011-1850.30	Pier F4 Dolphin Socketed H-Pile 3	9	04-Jul-12	14-Jul-12	Pier F4 Dolphin Socketed H-Pile 3																
1011-2000	Dismantle Piling Platform at Pier F4	6	14-Jul-12	21-Jul-12	Dismantle Piling Platform at Pier F4																
1011-1810.10	Pier F5 Dolphin Socketed H-Pile 1	7	23-Jul-12	30-Jul-12	Pier F5 Dolphin Socketed H-Pile 1																
1011-1810.20	Pier F5 Dolphin Socketed H-Pile 2	7	31-Jul-12	07-Aug-12	Pier F5 Dolphin Socketed H-Pile 2																
1011-1810.30	Pier F5 Dolphin Socketed H-Pile 3	7	08-Aug-12	15-Aug-12	Pier F5 Dolphin Socketed H-Pile 3																
1011-1810.40	Pier F5 Dolphin Socketed H-Pile 4	7	16-Aug-12	23-Aug-12	Pier F5 Dolphin Socketed H-Pile 4																
1011-1810.50	Pier F5 Dolphin Socketed H-Pile 5	7	24-Aug-12	31-Aug-12	Pier F5 Dolphin Socketed H-Pile 5																
1011-1810.60	Pier F5 Dolphin Socketed H-Pile 6	7	01-Sep-12	08-Sep-12	Pier F5 Dolphin Socketed H-Pile 6																
1011-2010	Dismantle Piling Platform at Pier F5	6	10-Sep-12	15-Sep-12	Dismantle Piling Platform at Pier F5																
1011-1800.30	Pier F6 Marine Bore Pile - F6-4	0	28-Feb-12 A	15-Jun-12 A	Pier F6 Marine Bore Pile - F6-4																
1011-2105	Marine bored pile testing F6	12	20-Jun-12	05-Jul-12	Marine bored pile testing F6																
1011-1790.10	Pier F6 Dolphin Socketed H-Pile 1	7	23-Jul-12	30-Jul-12	Pier F6 Dolphin Socketed H-Pile 1																
1011-1790.20	Pier F6 Dolphin Socketed H-Pile 2	7	01-Aug-12	08-Aug-12	Pier F6 Dolphin Socketed H-Pile 2																
1011-1790.30	Pier F6 Dolphin Socketed H-Pile 3	7	10-Aug-12	17-Aug-12	Pier F6 Dolphin Socketed H-Pile 3																
1011-1790.40	Pier F6 Dolphin Socketed H-Pile 4	7	20-Aug-12	27-Aug-12	Pier F6 Dolphin Socketed H-Pile 4																
1011-1790.50	Pier F6 Dolphin Socketed H-Pile 5	7	29-Aug-12	05-Sep-12	Pier F6 Dolphin Socketed H-Pile 5																
1011-1790.60	Pier F6 Dolphin Socketed H-Pile 6	7	07-Sep-12	14-Sep-12	Pier F6 Dolphin Socketed H-Pile 6																
1011-2020	Dismantle Piling Platform at Pier F6	6	15-Sep-12	21-Sep-12	Dismantle Piling Platform at Pier F6																
1011-1920.30	Pier F7 Marine Bored Pile F7-1	0	11-Apr-12 A	12-Jun-12 A	Pier F7 Marine Bored Pile F7-1																
1011-2110	Marine bored pile testing F7	3	14-Jun-12 A	22-Jun-12	Marine bored pile testing F7																
1011-1910	Pier F7 Dolphin Socketed H-Pile (6 nos.)	42	10-Sep-12	30-Oct-12	Pier F7 Dolphin Socketed H-Pile (6 nos.)																
1011-1864.40	Pier F8 Marine Bored Pile F8-3	0	31-Mar-12 A	31-May-12 A	Pier F8 Marine Bored Pile F8-3																
1011-2115	Marine bored pile testing F8	3	04-Jun-12 A	22-Jun-12	Marine bored pile testing F8																
1011-1862	Pier F8 Dolphin Socketed H-Pile (6 nos.)	42	15-Sep-12	05-Nov-12	Pier F8 Dolphin Socketed H-Pile (6 nos.)																
1011-1805	Pier F9 Marine Bored Pile	18	21-Jun-12*	13-Jul-12	Pier F9 Marine Bored Pile																
1011-1806	Pier F9 Marine Bored Pile (Low Headroom)	35	14-Jul-12	23-Aug-12	Pier F9 Marine Bored Pile (Low Headroom)																

- Remaining Level of Effort
- Actual Level of Effort
- Actual Work
- Remaining Work
- Critical Remaining Work
- ◆ Milestone

**Contract HY/2009/19**

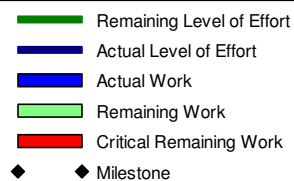
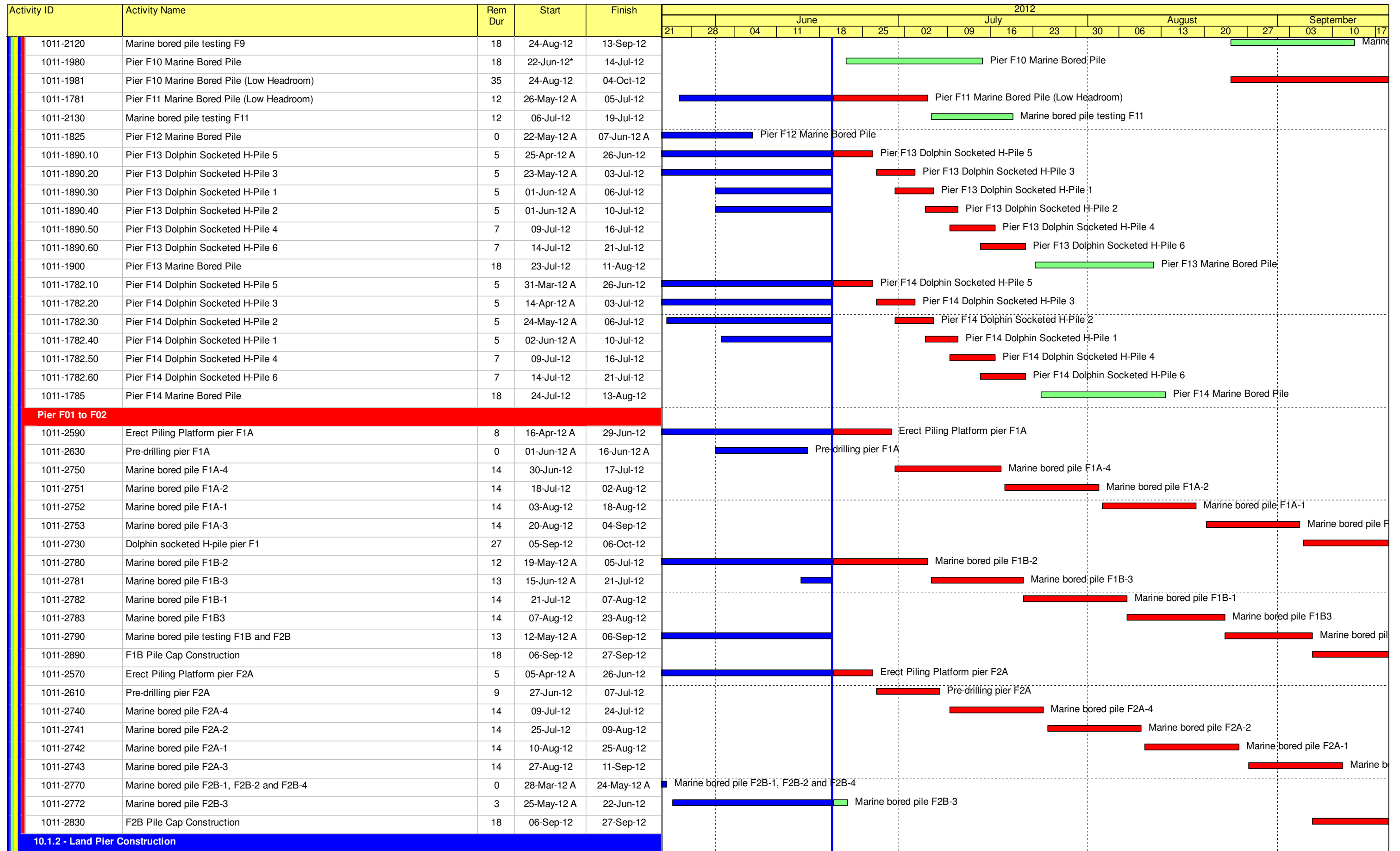
**Three Month Rolling Programme (20 JUN 2012 to 19 SEP 2012)**

3MRP

3MRP - JUN 2012 to SEP 2012

Page 5 of 7





**Contract HY/2009/19**

**Three Month Rolling Programme (20 JUN 2012 to 19 SEP 2012)**

3MRP

3MRP - JUN 2012 to SEP 2012

Page 6 of 7

Activity ID	Activity Name	Rem Dur	Start	Finish	2012																
					June					July					August					September	
					21	28	04	11	18	25	02	09	16	23	30	06	13	20	27	03	10
<b>Abutment D12</b>																					
1012-1090	Abutment D12 E/B Bridge Bored Pile Testing	9	21-May-12 A	30-Jun-12	Abutment D12 E/B Bridge Bored Pile Testing																
1012-1220	Abutment D12 construction (E/B Bridge)	42	03-Aug-12	20-Sep-12																	
<b>Pier D08 to D11</b>																					
1012-1030.05	Complete Relocation of FEHD Hoarding at Portion III	0		04-Jun-12 A	◆ Complete Relocation of FEHD Hoarding at Portion III																
1012-1030.10	Pier D08 Bored Pile D8-5	12	04-Jun-12 A	05-Jul-12	Pier D08 Bored Pile D8-5																
1012-1030.20	Pier D08 Bored Pile D8-2	12	11-Jun-12 A	19-Jul-12	Pier D08 Bored Pile D8-2																
1012-1030.30	Pier D08 Bored Pile D8-1	12	20-Jul-12	02-Aug-12	Pier D08 Bored Pile D8-1																
1012-1030.40	Pier D08 Bored Pile D8-6	12	03-Aug-12	16-Aug-12	Pier D08 Bored Pile D8-6																
1012-1030.50	Pier D08 Bored Pile D8-3	12	17-Aug-12	30-Aug-12	Pier D08 Bored Pile D8-3																
1012-1030.60	Pier D08 Bored Pile D8-4	12	31-Aug-12	13-Sep-12	Pier D08 Bored Pile D8-4																
1012-1130	Pier D09 Construct Pile Cap	18	01-Jun-12 A	12-Jul-12	Pier D09 Construct Pile Cap																
1012-1140	Pier D09 Construct Pier/Column	12	13-Jul-12	26-Jul-12	Pier D09 Construct Pier/Column																
1012-1150	Pier D09 Construct Crosshead	18	27-Jul-12	16-Aug-12	Pier D09 Construct Crosshead																
1012-1160	Pier D10 Construct Pile Cap	18	20-Jun-12	12-Jul-12	Pier D10 Construct Pile Cap																
1012-1170	Pier D10 Construct Pier/Column	12	13-Jul-12	26-Jul-12	Pier D10 Construct Pier/Column																
1012-1180	Pier D10 Construct Crosshead	18	17-Aug-12	06-Sep-12	Pier D10 Construct Crosshead																
1012-1190	Pier D11 Construct Pile Cap	18	12-Jun-12 A	02-Aug-12	Pier D11 Construct Pile Cap																
1012-1200	Pier D11 Construct Pier/Column	12	03-Aug-12	16-Aug-12	Pier D11 Construct Pier/Column																
1012-1210	Pier D11 Construct Crosshead	18	17-Aug-12	06-Sep-12	Pier D11 Construct Crosshead																
<b>Pier D05 to D07</b>																					
1012-1290.20	Pier D05 Bored Pile D05-1	12	01-Aug-12*	14-Aug-12	Pier D05 Bored Pile D05-1																
1012-1300	Pier D05/D06/D07 Bored Piles Testing	18	15-Aug-12	04-Sep-12	Pier D05/D06/D07 Bored Piles Testing																
1012-1310	Pier D06 Construct Pile Cap	18	05-Sep-12	25-Sep-12	Pier D06 Construct Pile Cap																
1012-1270	Pier D07 Bored Pile D07-2	12	09-Jun-12 A	05-Jul-12	Pier D07 Bored Pile D07-2																
1012-1271	Pier D07 Bored Pile D07-5	18	06-Jul-12	26-Jul-12	Pier D07 Bored Pile D07-5																
1012-1272	Pier D07 Bored Pile D07-3	18	27-Jul-12	16-Aug-12	Pier D07 Bored Pile D07-3																
1012-1273	Pier D07 Bored Pile D07-6	18	17-Aug-12	06-Sep-12	Pier D07 Bored Pile D07-6																
1012-1274	Pier D07 Bored Pile D07-1	18	07-Sep-12	27-Sep-12	Pier D07 Bored Pile D07-1																
<b>10.1.3 - E/B Bridge Construction</b>																					
<b>Bridge D3</b>																					
1013-1000.10	Segment and Beam Launching - Procurement of Sub-contractor	0	21-Jan-12 A	05-Jun-12 A	Segment and Beam Launching - Procurement of Sub-contractor																
1013-1000.20	Segment and Beam Launching - Submit Design Launching Girder	24	14-May-12 A	19-Jul-12	Segment and Beam Launching - Submit Design Launching Girder																
1013-1010	Segment and Beam Launching - Fabricate Launching Girder	60	11-Jun-12 A	30-Aug-12	Segment and Beam Launching - Fabricate Launching Girder																
1013-1000.30	Segment and Beam Launching - Approve Design Launching Girder	28	20-Jul-12	21-Aug-12	Segment and Beam Launching - Approve Design Launching Girder																
1013-1011	Segment and Beam Launching - Approve Design Launching Girder	9	31-Aug-12	10-Sep-12	Segment and Beam Launching - Approve Design Launching Girder																
<b>10.3 - Middle Bridge (Bridge F)</b>																					
<b>10.3.1 - Pier Construction</b>																					
<b>Abutment D12</b>																					
1031-1040	Bored Piles (4 nos) at D12 at III (for F1B1)	0	07-May-12 A	01-Jun-12 A	Bored Piles (4 nos) at D12 at III (for F1B1)																

- Remaining Level of Effort
- Actual Level of Effort
- Actual Work
- Remaining Work
- Critical Remaining Work
- ◆ Milestone

**Contract HY/2009/19**

**Three Month Rolling Programme (20 JUN 2012 to 19 SEP 2012)**

3MRP

3MRP - JUN 2012 to SEP 2012

Page 7 of 7